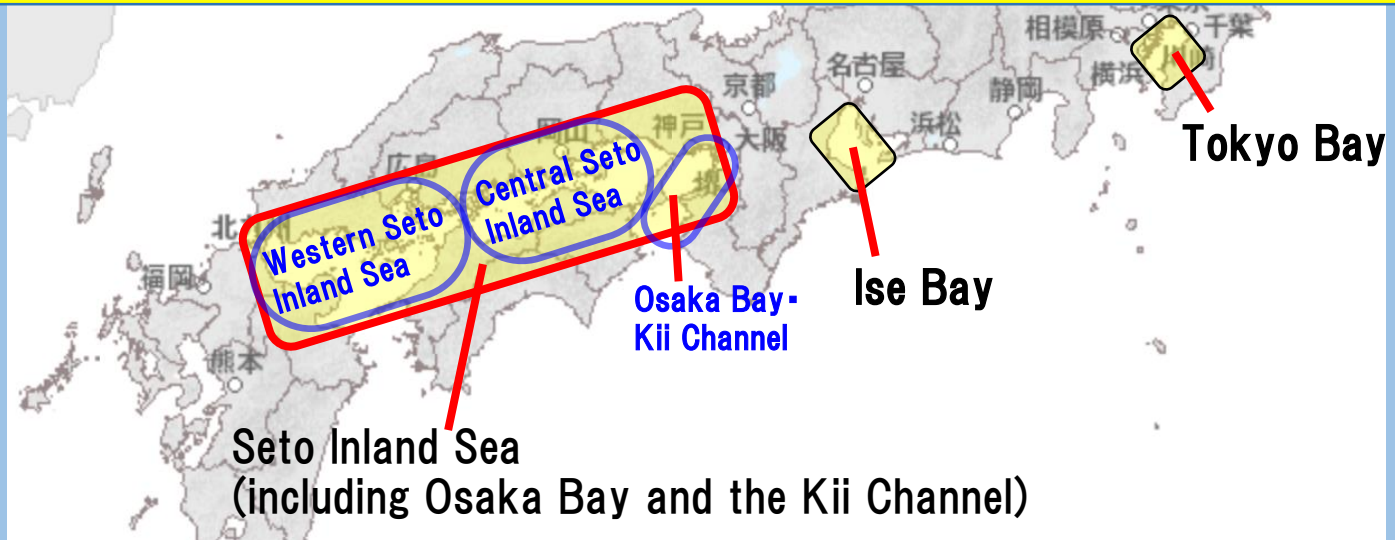


In order to take all possible measures to prevent accidents caused by dragging anchors when typhoons/stormy weather and extreme sea conditions are expected, a **system concerning recommendations and orders for ships to evacuate bays and to restrict anchoring** will be established.

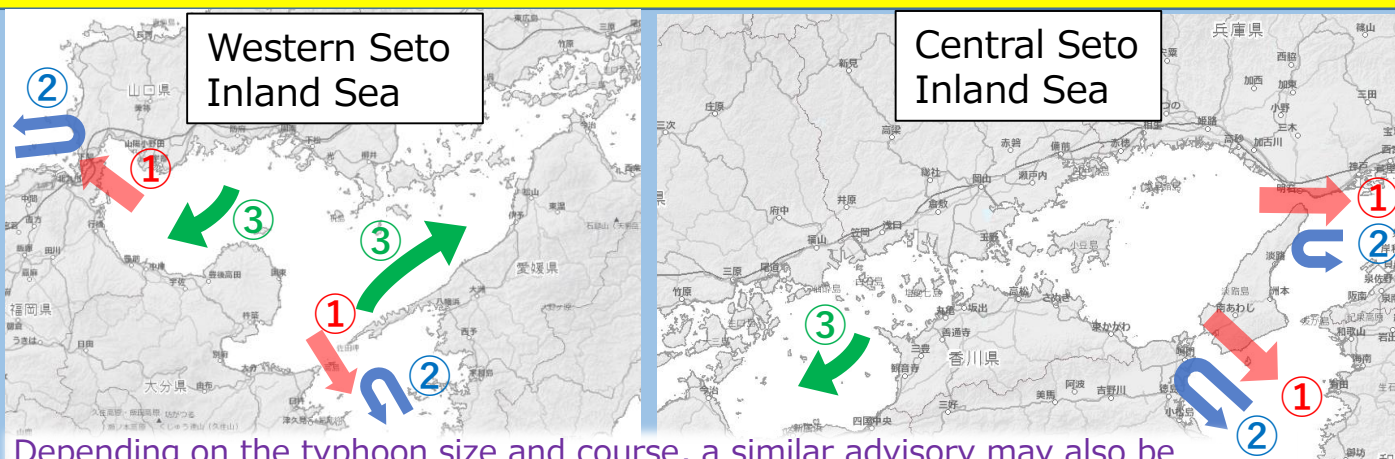
## Partial Amendment of the Act on Maritime Traffic Safety To come into effect as from July 1, 2021

**Sea areas subject to advisories and orders to evacuate the bay or take other action**



- ✓ Subject areas are **Tokyo Bay**, **Ise Bay**, and the **Seto Inland Sea** (including Osaka Bay and the Kii Channel).
- ✓ This rule applies to ports connected with the sea area where the Act on Maritime Traffic Safety applies.

## Overview of rules in the Seto Inland sea

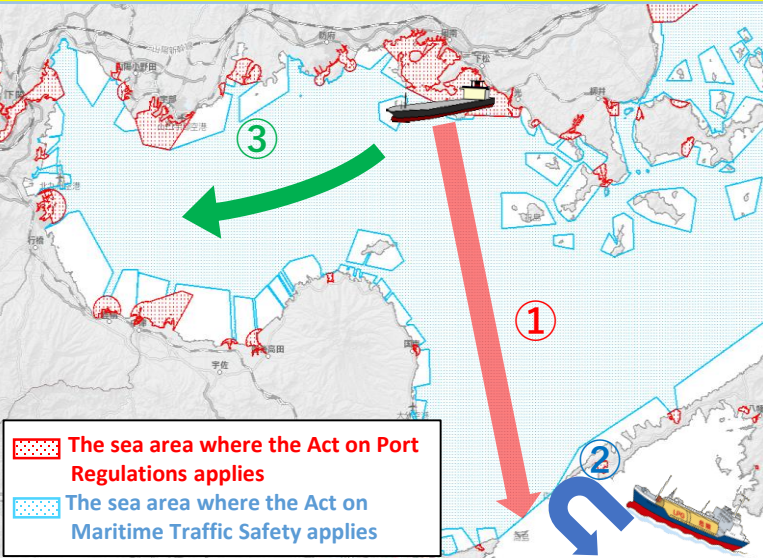


Depending on the typhoon size and course, a similar advisory may also be issued for other sea areas.

**[Advisory contents]**

- ① Evacuate to outside the subject sea area**  
However this does not apply to vessels that can safely harbor in areas within the subject sea area that are less affected by the typhoon.
- ② Refrain from entering the area.**  
However this does not apply to vessels that can safely harbor in areas within the subject sea area that are less affected by the typhoon.
- ③ Evacuate to a safe sea area**

# For vessels that need to evacuate, JCG Commandant will issue recommendations/orders to evacuate ports and bays in a unified manner.



## 【Advisory contents】

- ① Evacuate to outside the subject sea area
- ② Refrain from entering the area
- ③ Evacuate to a safe sea area

※ The captain, etc., should make a comprehensive judgment on the sea area of the evacuation destination, taking into consideration the type, size, cargo status, etc., of the ship typhoon speed, typhoon size.

## ■ Designated ports

### Central Seto Inland Sea

- Hyogo Pref. Akashi Port, Higashiharima Port, Yagi Port, Himeji Port, Aioi Port, Ako Port, Minato Port, Tsushi Port, Gunke Port, Tomishima Port
- Okayama Pref. Hinase Port, Katagami port, Tsurumi Port, Ushimado Port, Saidaiji Port, Ogushi Port, Okayama Port, Uno Port, Hibi Port, Kotoura Port, Mino Port, Shimotsui Port, Mizushima port, Kasaoka Port
- Hiroshima Pref. Fukuyama Port
- Kagawa Pref. Toyohama Port, Kannonji Port, Nio Port, Takuma Port, Tadotsu Port, Marugame Port, Sakaide Port, Kasai Port, Takamatsu Port, Shido Port, Tsuda Port, Sanbonmatsu Port, Hiketa Port, Sakate Port, Utsumi Port, Ikeda Port, Tonosyo Port, Naojima Port
- Ehime Pref. Imabari Port, Yoshiumi Port, Nyugawa Port, Saijo Port, Niihama Port, Sangawa Port, Mishimakawanoe Port, Okamura Port, Miyaura Port, Hakata Port, Kikuma Port

### Western Seto Inland Sea (abridgement)

## Vessels subject to the “Evacuate to outside the subject sea area” and “Avoid entering” advisories

- Length 160 meters or more  
Car carriers, container vessels, gas tankers, tankers
- Length 200 meters or more  
Passenger vessels, ferries, cargo vessels
- Oil tankers with gross tonnage 50,000 tons or more  
(except for liquefied gas transport vessels)
- Liquefied gas transport vessels with gross tonnage 25,000 tons or more



However the following vessels are not subject to the advisories.

- Coastal ferries, coastal RORO vessels, and other coastal vessels navigating on regular routes.
- Coastal vessels navigating on “no wave ” “inshore ” or “limited offshore” routes.



Navigation Safety Div., Maritime Traffic Dept.,  
5th Regional Coast Guard headquarters

TEL: +81-78-391-6551

Navigation Safety Div., Maritime Traffic Dept.,  
6th Regional Coast Guard headquarters

TEL: +81-82-251-5111



Anchor dragging  
accident prevention  
portal site