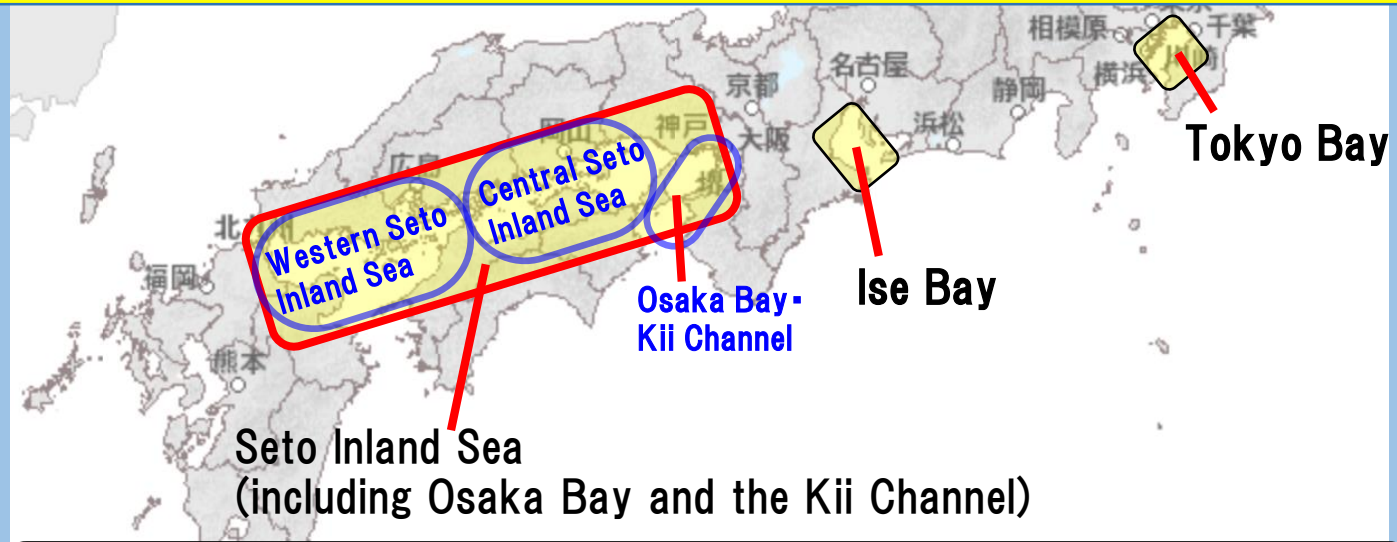


In order to take all possible measures to prevent accidents caused by dragging anchors when typhoons/stormy weather and extreme sea conditions are expected, a **system concerning recommendations and orders for ships to evacuate bays and to restrict anchoring** will be established.

Partial Amendment of the Act on Maritime Traffic Safety To come into effect as from July 1, 2021

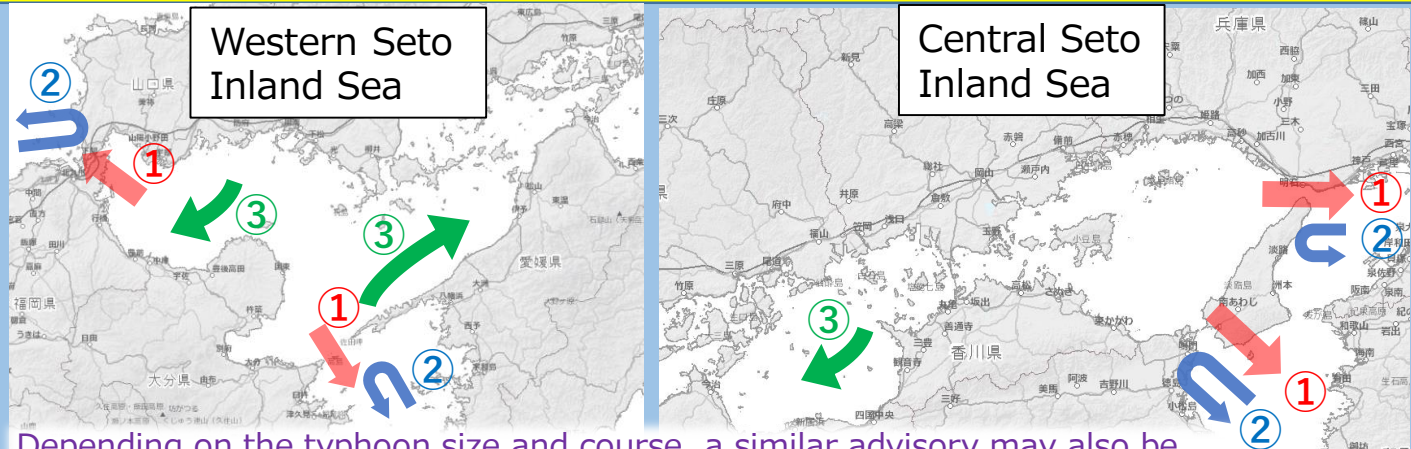
Sea areas subject to advisories and orders to evacuate the bay or take other action



**Seto Inland Sea
(including Osaka Bay and the Kii Channel)**

- ✓ Subject areas are **Tokyo Bay, Ise Bay, and the Seto Inland Sea** (including Osaka Bay and the Kii Channel).
- ✓ This rule applies to ports connected with the sea area where the Act on Maritime Traffic Safety applies.

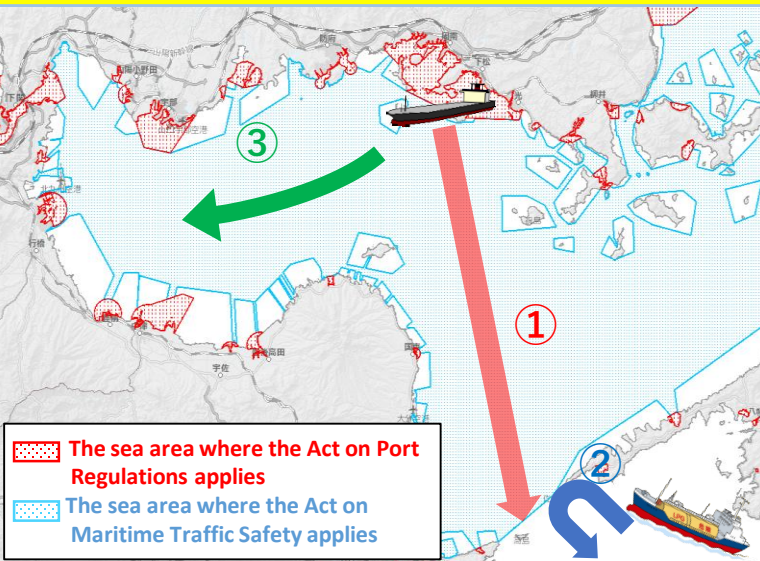
Overview of rules in the Seto Inland sea



Depending on the typhoon size and course, a similar advisory may also be issued for other sea areas.

- 【Advisory contents】**
- ① **Evacuate to outside the subject sea area**
However this does not apply to vessels that can safely harbor in areas within the subject sea area that are less affected by the typhoon.
 - ② **Refrain from entering the area.**
However this does not apply to vessels that can safely harbor in areas within the subject sea area that are less affected by the typhoon.
 - ③ **Evacuate to a safe sea area**

For vessels that need to evacuate, JCG Commandant will issue recommendations/orders to evacuate ports and bays in a unified manner.



【Advisory contents】

① Evacuate to outside the subject sea area

② Refrain from entering the area

③ Evacuate to a safe sea area

※ The captain, etc., should make a comprehensive judgment on the sea area of the evacuation destination, taking into consideration the type, size, cargo status, etc., of the ship typhoon speed, typhoon size.

■ Designated ports

Central Seto Inland Sea (abridgement)

Western Seto Inland Sea

- | | |
|-----------------|--|
| Hiroshima Pref. | Onomichiotsaki Port, Tadanoumi Port, Takehara Port, Akitsu Poet, Kure Port, Hiroshima Port, Ootake Port, Habu Port, Shigei Port, Sagi Port, Setoda Port, Mebarusaki Port, Kinoe Port, Mitarai Port, Onishi Port, Kamagari Port, Itsukushima Port |
| Ehime Pref. | Mitsukue Port, Nagahama Port, Guntyu Port, Matsuyama Port, Hojo Port |
| Yamaguchi Pref. | Iwakuni Port, Kuga Port, Agenosyo Port, Komatsu Port, Yanai Port, Murotsu Port, Kaminoseki Port, Heizei Port, Murodumi Port, Tokuyamagudamatsu Port, Mitajirinakanozeki Port, Ako Port, Yamaguchi Port, Maruo Port, Ube Port, Onoda Port, Asa Port (※ Kanmon Port is recorded Fukuoka Pref.) |
| Fukuoka Pref. | Kanmon Port, Kanda Port (※ Nakatsu Port is recorded Oita Pref.) |
| Oita Pref. | Nakatsu Port, Beppu Port, Oita Port, Saganoseki Port |

Vessels subject to the “Evacuate to outside the subject sea area” and “Avoid entering” advisories

- Length 160 meters or more
Car carriers, container vessels, gas tankers, tankers
- Length 200 meters or more
Passenger vessels, ferries, cargo vessels
- Oil tankers with gross tonnage 50,000 tons or more
(except for liquefied gas transport vessels)
- Liquefied gas transport vessels with gross tonnage 25,000 tons or more



However the following vessels are not subject to the advisories.

- Coastal ferries, coastal RORO vessels, and other coastal vessels navigating on regular routes.
- Coastal vessels navigating on “no wave ” “inshore ” or “limited offshore” routes.



Navigation Safety Div., Maritime Traffic Dept.,
6th Regional Coast Guard headquarters

TEL: +81-82-251-5111

Navigation Safety Div., Maritime Traffic Dept.,
7th Regional Coast Guard headquarters

TEL: +81-93-321-2931



Anchor dragging
accident prevention
portal site