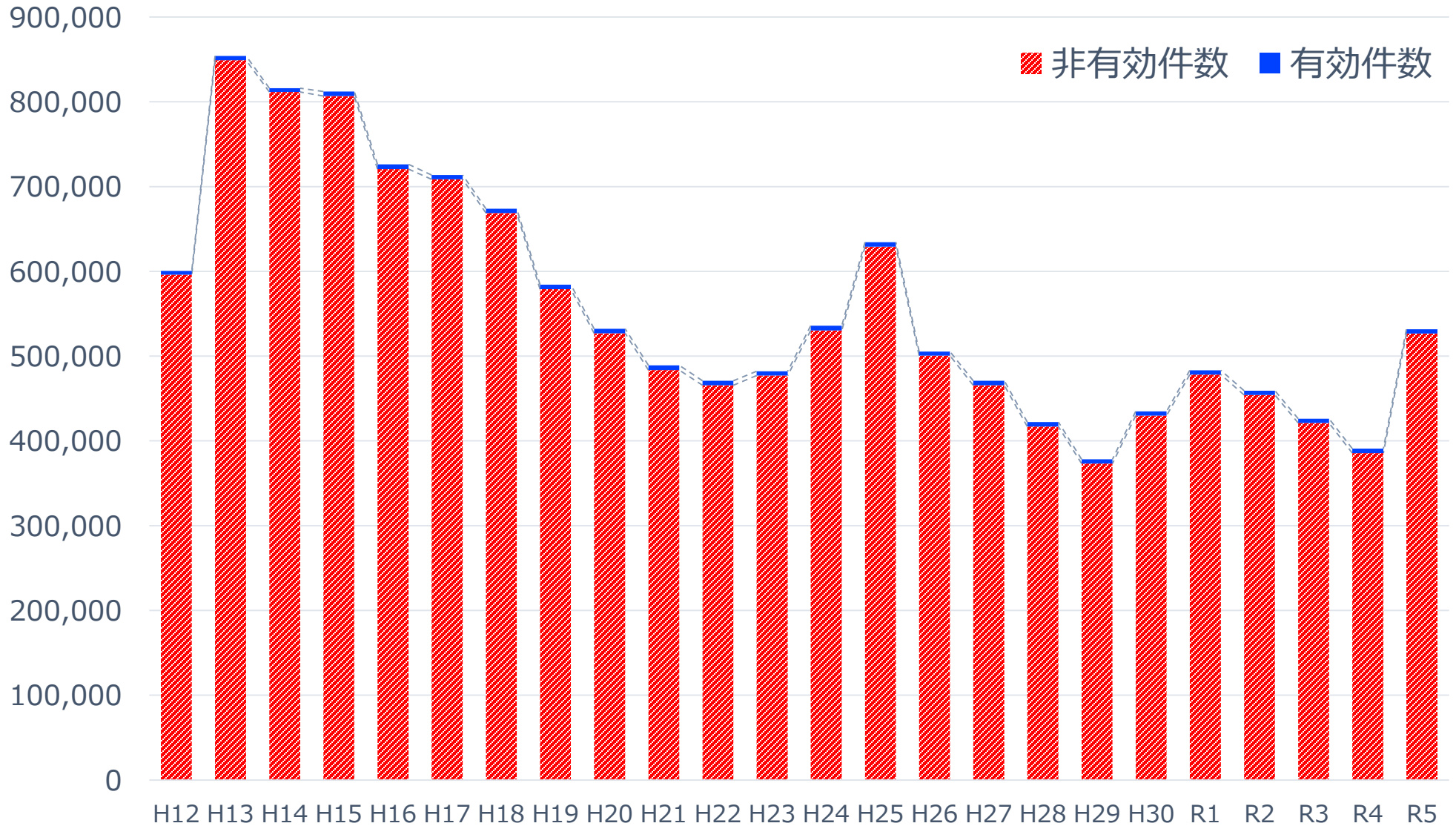
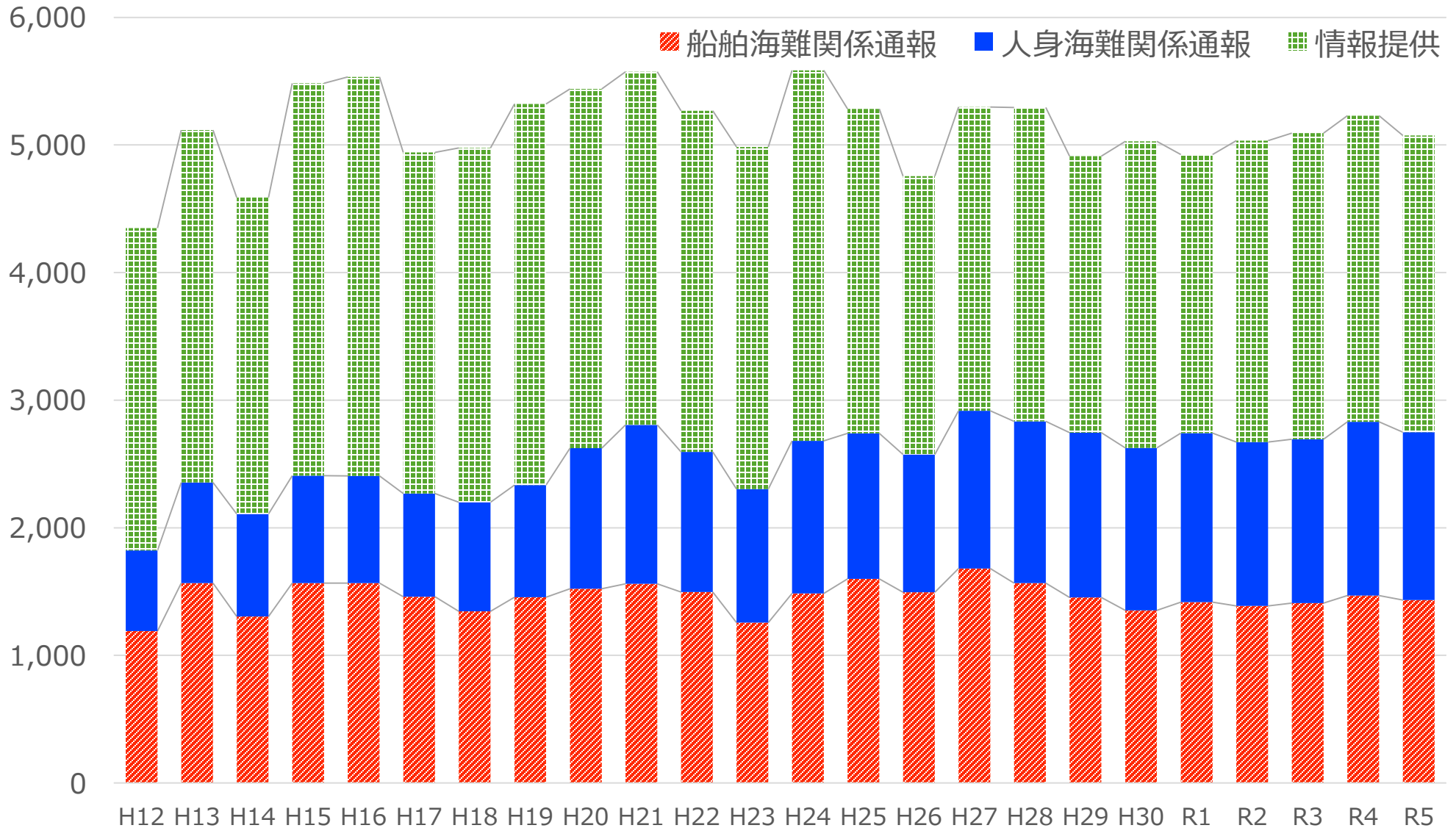


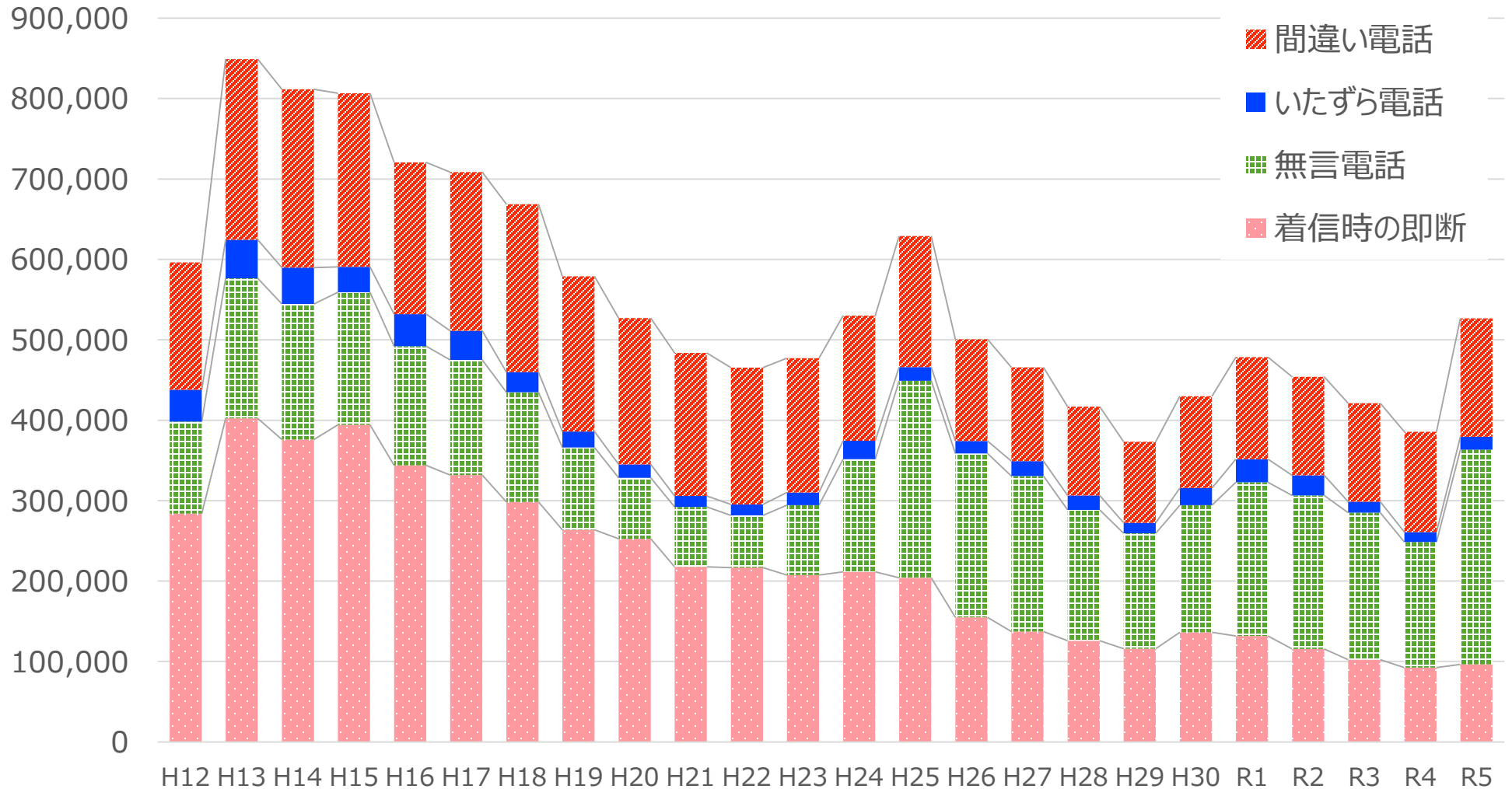
118番通報の年別有効・非有効架電件数



118番通報の年別有効架電件数の傾向



118番通報の年別非有効架電件数の傾向



運用開始から令和5年までの通報実績

	H12	H13	H14	H15	H16	H17	H18	H19	H20	H21	H22	H23
有効件数	4,349	5,116	4,588	5,483	5,533	4,942	4,976	5,321	5,440	5,573	5,268	4,985
船舶海難関係通報	1,190	1,566	1,304	1,566	1,566	1,460	1,346	1,456	1,523	1,561	1,496	1,257
人身海難関係通報	632	789	805	843	840	809	855	878	1,101	1,245	1,099	1,047
情報提供	2,527	2,761	2,479	3,074	3,127	2,673	2,775	2,987	2,816	2,767	2,673	2,681
非有効件数	596,183	849,011	811,564	806,683	720,604	708,689	668,763	578,946	526,888	483,588	465,567	477,246
間違い電話	158,132	224,624	221,770	215,928	188,657	197,345	208,826	192,894	181,933	177,688	170,145	166,957
いたずら電話	39,779	47,921	45,163	31,506	39,906	36,254	25,017	20,015	16,495	13,697	13,762	16,060
無言電話	114,399	174,189	168,697	164,831	148,297	143,135	136,391	102,185	75,879	74,628	64,861	86,834
着信時の即断	283,873	402,277	375,934	394,418	343,744	331,955	298,529	263,852	252,581	217,575	216,799	207,395
合計件数	600,532	854,127	816,152	812,166	726,137	713,631	673,739	584,267	532,328	489,161	470,835	482,231

	H24	H25	H26	H27	H28	H29	H30	R1	R2	R3	R4	R5
有効件数	5,584	5,282	4,755	5,297	5,293	4,913	5,028	4,926	5,034	5,087	5,229	5,074
船舶海難関係通報	1,486	1,600	1,494	1,680	1,567	1,454	1,352	1,417	1,388	1,410	1,468	1,433
人身海難関係通報	1,196	1,140	1,080	1,237	1,267	1,291	1,274	1,324	1,283	1,284	1,363	1,316
情報提供	2,902	2,542	2,181	2,380	2,459	2,168	2,402	2,185	2,363	2,393	2,398	2,325
非有効件数	530,166	629,069	500,600	465,602	416,837	373,323	429,771	478,276	454,063	421,046	385,606	526,740
間違い電話	155,521	162,992	126,366	116,567	110,281	100,981	114,112	126,678	122,577	122,421	124,724	147,365
いたずら電話	23,144	16,914	15,535	18,422	17,942	12,792	21,287	28,656	24,991	13,519	12,433	16,030
無言電話	140,153	245,094	203,668	193,499	162,746	143,764	157,963	191,192	190,795	182,721	156,073	266,886
着信時の即断	211,348	204,069	155,031	137,114	125,868	115,786	136,409	131,750	115,700	102,385	92,376	96,459
合計件数	535,750	634,351	505,355	470,899	422,130	378,236	434,799	483,202	459,097	426,133	390,835	531,814