

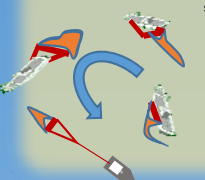
## Fishing in Fukuoka Bay

### Fishing Method and Equipment in Fukuoka Bay I [Shrimp Trawl Fishing]

■ **Period** : from April 16 to December 16  
 ■ **Time** : mainly from 13:00 to 07:00 of the following day

① **Throw net**

Put the helm hard portside and turn to the left to make a bag-shaped net swell in water flow




30m

◇ Do not come close to a boat as it is sometimes difficult for the boat to keep a lookout while throwing a net


④ **Clean net**

Put the helm hard portside and circle two or three times




② **Tow net**

3.5kn.  
30min. - 1h at longest




150m

◇ While towing a net, a boat can not veer drastically. To cross the path of the boat from its stern side, vessels are required to keep a distance of more than 100m away from the stern.

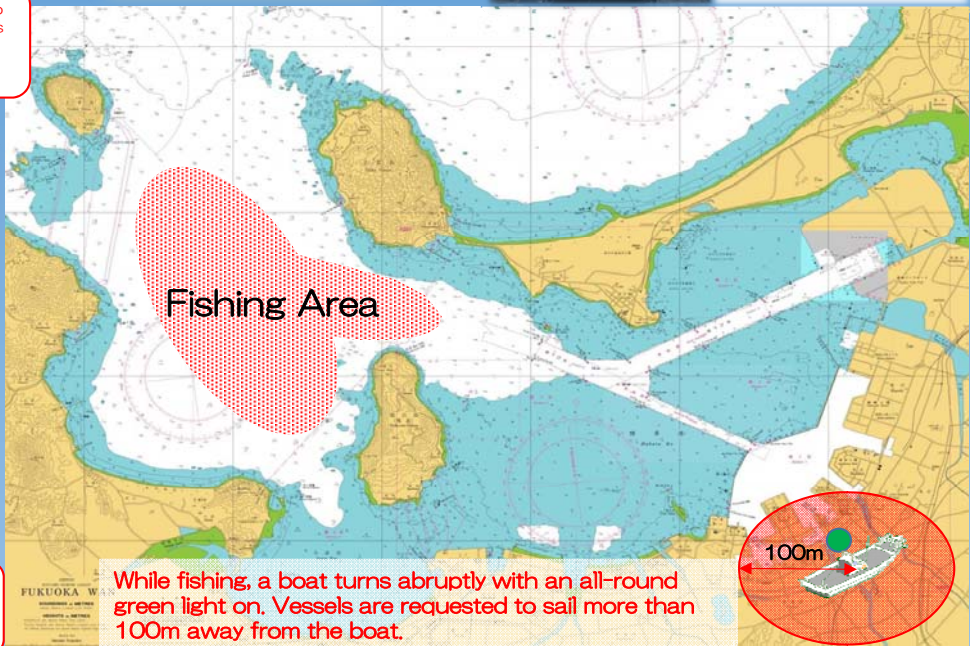
③ **Pull in net**

Stop and back astern toward a net to pull in the net. It takes 5-7 minutes.



Shorten a rope gradually

◇ When a boat stops or backs astern, it is pulling in a net and can not avoid colliding with other vessels. Vessels are strictly prohibited to come close to the boat!!



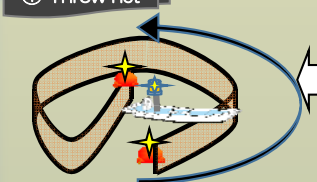
### Fishing Method and Equipment in Fukuoka Bay II [Circling Gillnet Fishing]

■ **Period** : all year round  
 ■ **Time** : 24 hours

While fishing, a boat turns on a yellow revolving light. Vessels are requested to sail more than 100m away from the boat.

① **Throw net**

Time: about 5min.



Throw a net from the stern and sail against the tide in the counterclockwise direction.

② **Pull in net**

Yellow revolving light




Time: 30-60min.

Remove fish from a net while reeling in it from the opposite side of having thrown the net. The boat can not avoid collision with vessels while pulling in a net.

◇ When a boat stops, it is pulling in a net. Vessels are strictly prohibited to come close to the boat!!

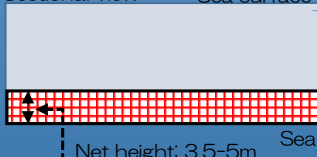
◇ While throwing a net, a boat may not be able to veer. Vessels are requested to pay careful attention.



About 160m in diameter

A boat circles for 1-2 minutes in a net.

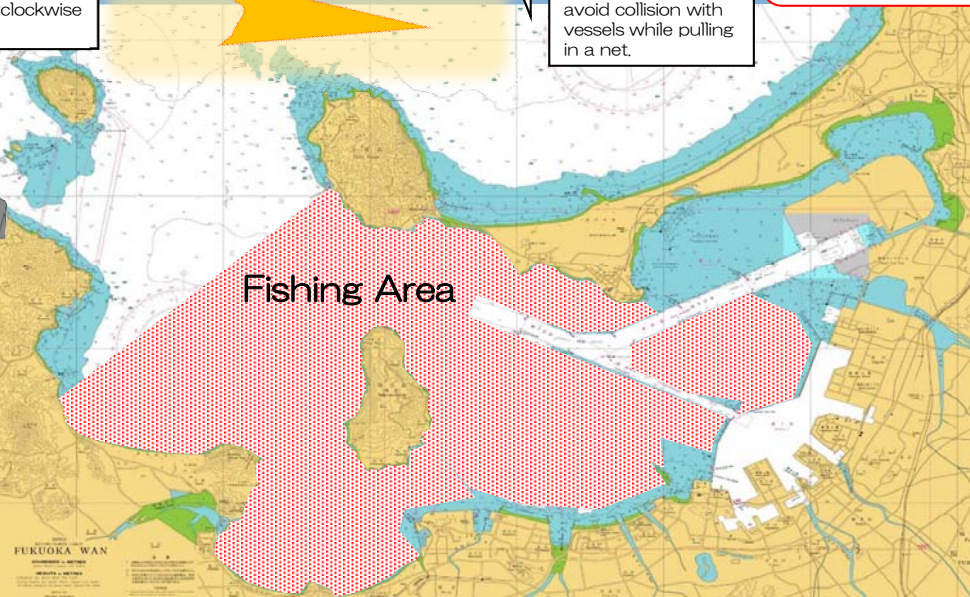
Sectional view



Sea surface

Sea bottom

Net height: 3.5-5m



## Fishing in Fukuoka Bay

### Fishing Method and Equipment in Fukuoka Bay III [Japanese Spanish Mackerel Drift-net Fishing]

■ **Period** : from Sept. 1 to Dec. 31 \*from Oct. 1 at Fukuoka Bay  
 ■ **Time** : about 1 hour from sunset, until around 20:00

**Vessels with draft of more than 6m are requested to exercise caution!!**

**Fishing Area**

Yellow flashing light  
 Two red lights  
 Two-colored light

Orange flag

To prevent accidents, Shikanoshima branch office of Fukuoka-shi Fisheries Cooperative Association adjusts fishing time in accordance with the information on large vessels' entry of the port.  
 \* The vessels to/from the anchorage are especially requested to pay attention.

◆ Spread a net perpendicular to the tide  
 ◆ Every net is placed in the same direction in order  
 ◆ Red and blue beacon lights are placed on both ends of the net  
 ◆ The depth from the surface to the net is 6-7m, so large vessels with deep draft can not sail on the fishing area.

Be careful as the upper end of the net is 6-7m below the surface

Two white flashing beacon lights in the middle of the net

10-14m

800-850m

Southwest

Northeast

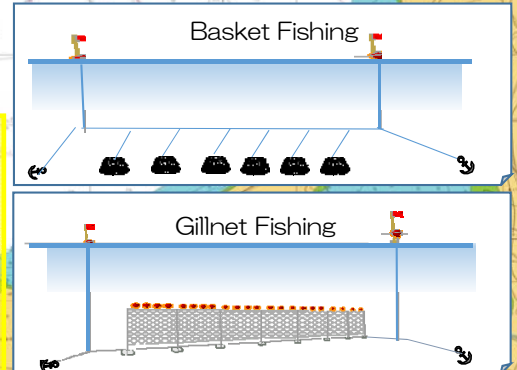
- Blue flashing beacon light
- Blue flag
- White flashing beacon light

- Red flashing beacon light
- Red flag
- White flashing beacon light

### Fishing Method and Equipment in Fukuoka Bay IV [Basket Fishing and Gillnet Fishing]



The basket fishing and the gillnet fishing are conducted all over Fukuoka Bay. Some fishing equipments suffer damages from vessels sailing in the bay. The vessels are required to pay careful attention.



Where is a net?

Damage of gillnet fishing equipment

Damage of basket fishing equipment

A ship propeller gets entangled in fishing equipments!