

# Suo Marine Area Guide Map

MAY.2023

## Matters requiring attention

- \* Use of detailed marine chart
- \* Right enforcement of appropriate watch
- \* Keep ears open for International VHF 16ch
- \* AIS actuation on a steady basis

An **urgent message** to Japan Coast Guard, International VHF 16ch "Hiroshima Coast Guard" or "Moji Coast Guard"

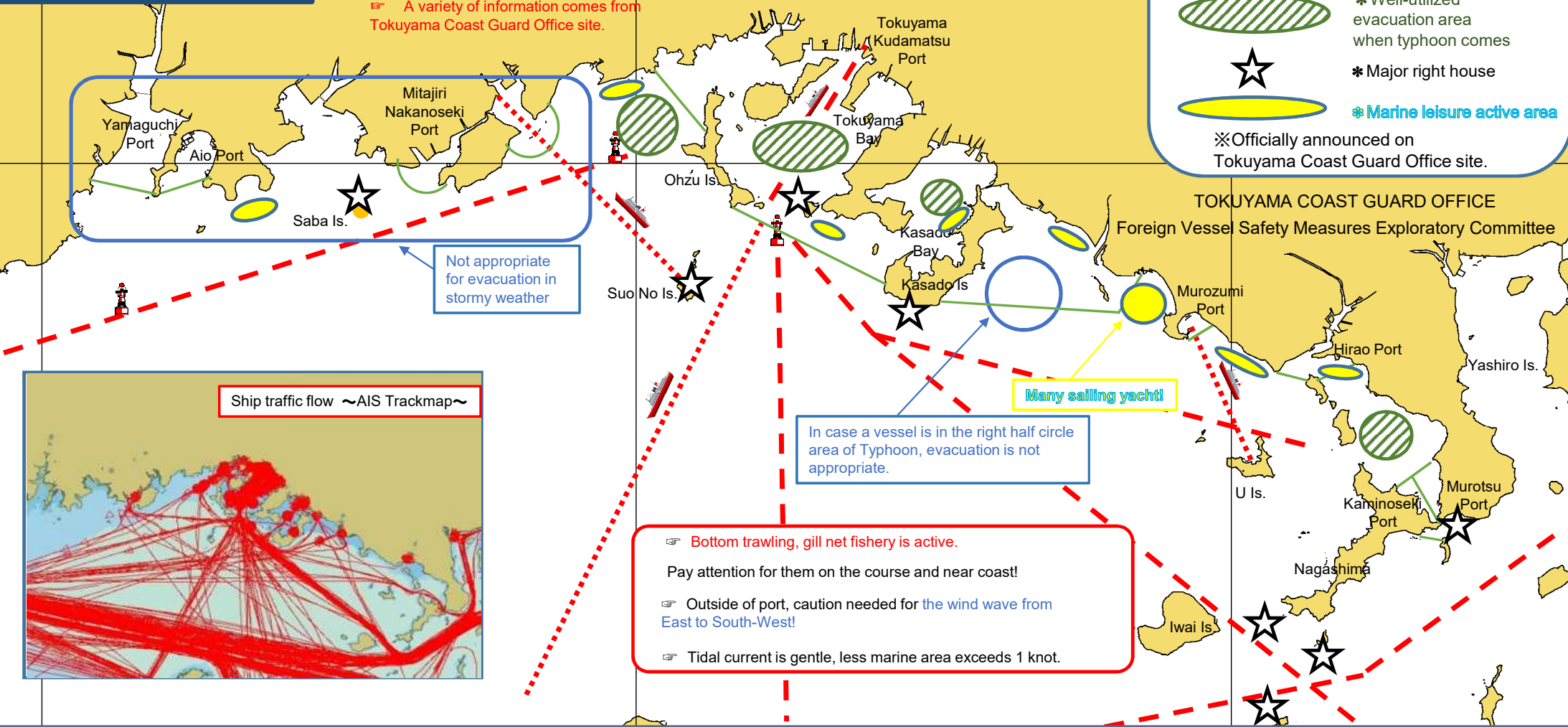
Port Operation Service VHF 16ch, Tokuyama Kudamatsu Port Radio

A variety of information comes from Tokuyama Coast Guard Office site.

- \* Ship traffic flow
- \* Weather and sea
- \* Reference

- \* Major course
- \* Major ferry course
- \* Well-utilized evacuation area when typhoon comes
- ★ \* Major right house
- \* Marine leisure active area
- ※ Officially announced on Tokuyama Coast Guard Office site.

TOKUYAMA COAST GUARD OFFICE  
Foreign Vessel Safety Measures Exploratory Committee



Not appropriate for evacuation in stormy weather

In case a vessel is in the right half circle area of Typhoon, evacuation is not appropriate.

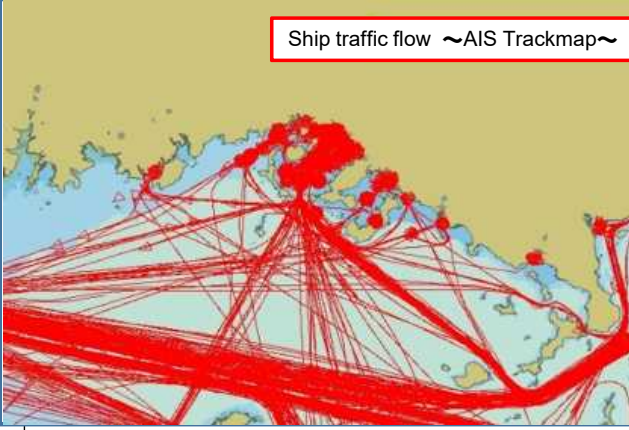
Many sailing yacht!

☞ Bottom trawling, gill net fishery is active.  
Pay attention for them on the course and near coast!

☞ Outside of port, caution needed for the wind wave from East to South-West!

☞ Tidal current is gentle, less marine area exceeds 1 knot.

Ship traffic flow ~AIS Trackmap~



# Eastern Region

**\*Ship traffic flow**  
**\*Reference**

--- Ship icon ---  
 ... Ship icon ...

⊖ Well-utilized evacuation area when typhoon comes

★ Major lighthouse, light beacon

⊖ Marine leisure active area

⊖ Fishing operation active area

★ Major Port

**\*Weather and sea**  
**\*Major course**  
**\*Major ferry course**

Marine navigation is not appropriate for shallow water.

Kaminosekihashi - height: 23m, Navigation possible width: 50m  
 Bad visibility through and Fishing ship traffic is active.

Fishing Ports are dotted along Nagashima coast

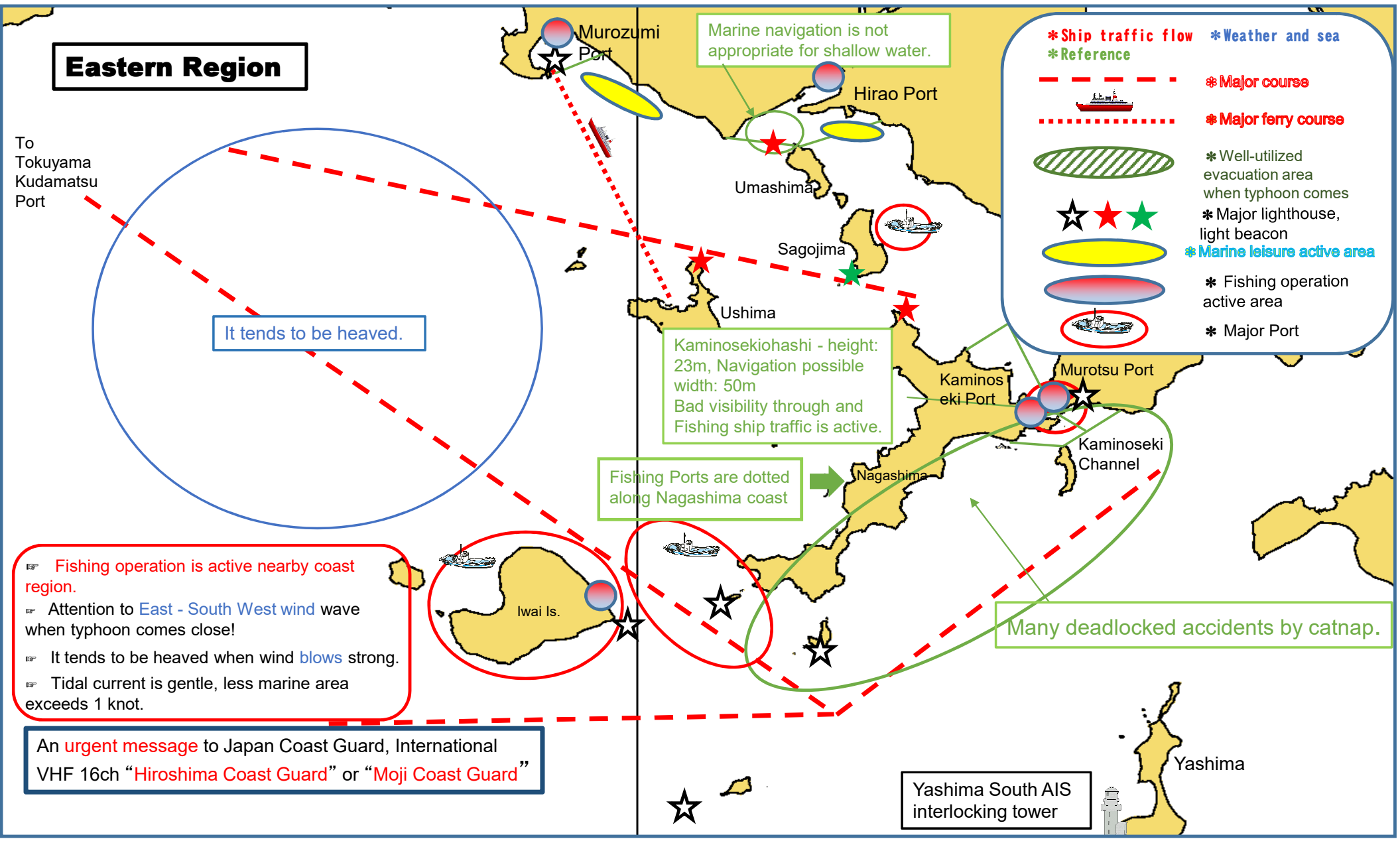
Many deadlocked accidents by catnap.

It tends to be heaved.

Fishing operation is active nearby coast region.  
 Attention to East - South West wind wave when typhoon comes close!  
 It tends to be heaved when wind blows strong.  
 Tidal current is gentle, less marine area exceeds 1 knot.

An urgent message to Japan Coast Guard, International VHF 16ch "Hiroshima Coast Guard" or "Moji Coast Guard"

Yashima South AIS interlocking tower



# Central Region

Mooring is in danger!

ShunanOhashi - height: 27m

Attention to Western-leaning wind wave!

Attention to the confluence of ship and vessel!

Speed down and avoid to come and go at this area!

Sea berth, Many mooring buoy!

Attention to the confluence of ship and vessel!

Many evacuation vessel from typhoon!

Kasadoohashi - height: 24m

In case a vessel is in the right half circle area of Typhoon, evacuation is not appropriate.

An urgent message to Japan Coast Guard, International VHF 16ch "Hiroshima Coast Guard" or "Moji Coast Guard"

Caution needed for the wind wave from East to South-East!

If Southern-leaning strong wind blows continuously, it makes big heave.

- ☞ There're local rules around Senjima.
- ☞ Fishing operation is active in all central region.
- ☞ Attention to Southern-leaning wind wave!
- ☞ Tidal current is gentle, less marine area exceeds 1 knot.

\* Ship traffic flow \* Weather and sea  
\* Reference

--- Major course

--- Major ferry course

Well-utilized evacuation area when typhoon comes

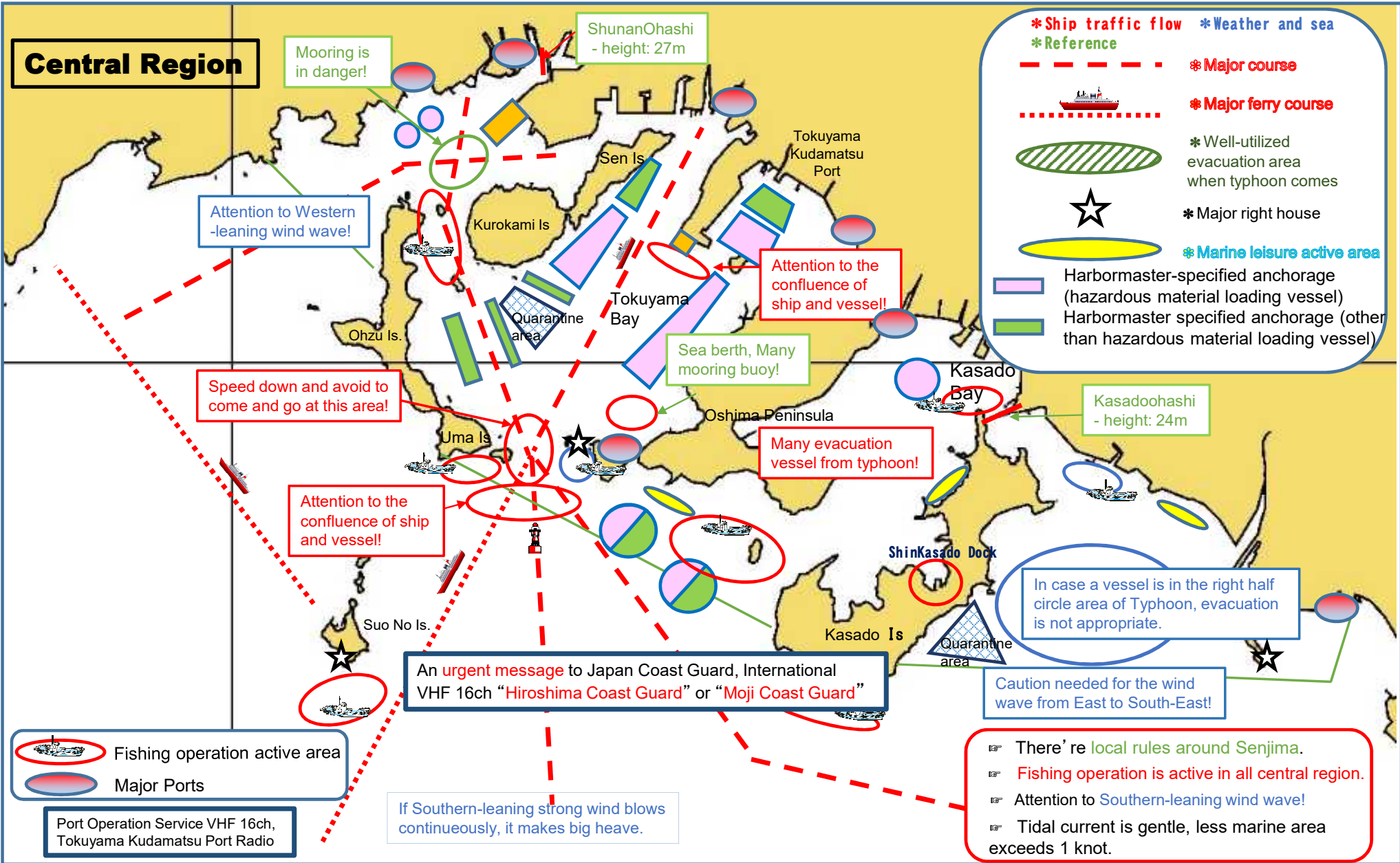
★ Major right house

Marine leisure active area

Harbormaster-specified anchorage (hazardous material loading vessel)  
Harbormaster specified anchorage (other than hazardous material loading vessel)

Fishing operation active area  
Major Ports

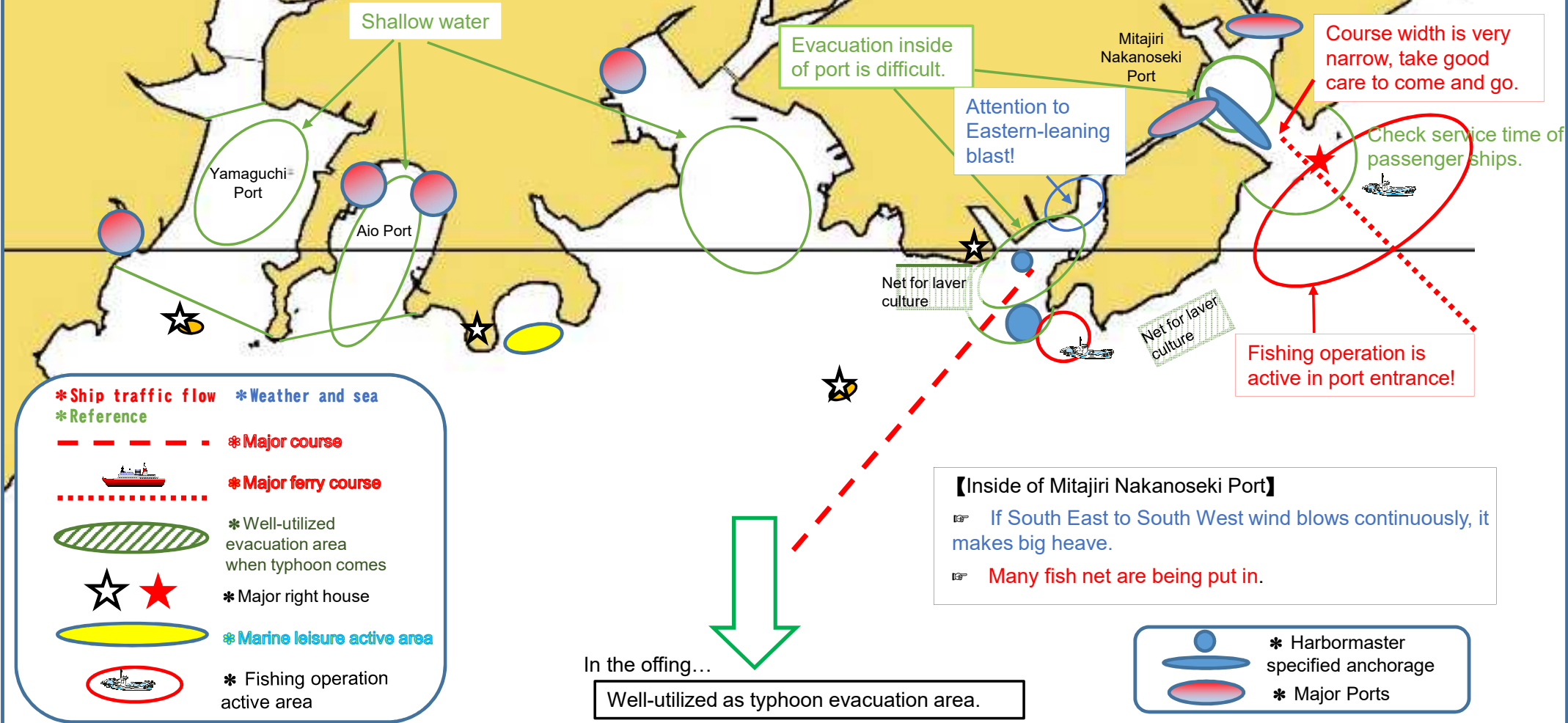
Port Operation Service VHF 16ch, Tokuyama Kudamatsu Port Radio



# Western Region

An urgent message to Japan Coast Guard, International VHF 16ch "Hiroshima Coast Guard" or "Moji Coast Guard"

- Bottom trawling fishing is active in the offing.
- Attention to Southern-leaning wind wave!
- Tidal current is gentle, less marine area exceeds 1 knot.



Course width is very narrow, take good care to come and go.

Evacuation inside of port is difficult.

Attention to Eastern-leaning blast!

Check service time of passenger ships.

Fishing operation is active in port entrance!

**【Inside of Mitajiri Nakanoseki Port】**

- If South East to South West wind blows continuously, it makes big heave.
- Many fish net are being put in.

In the offing...  
Well-utilized as typhoon evacuation area.