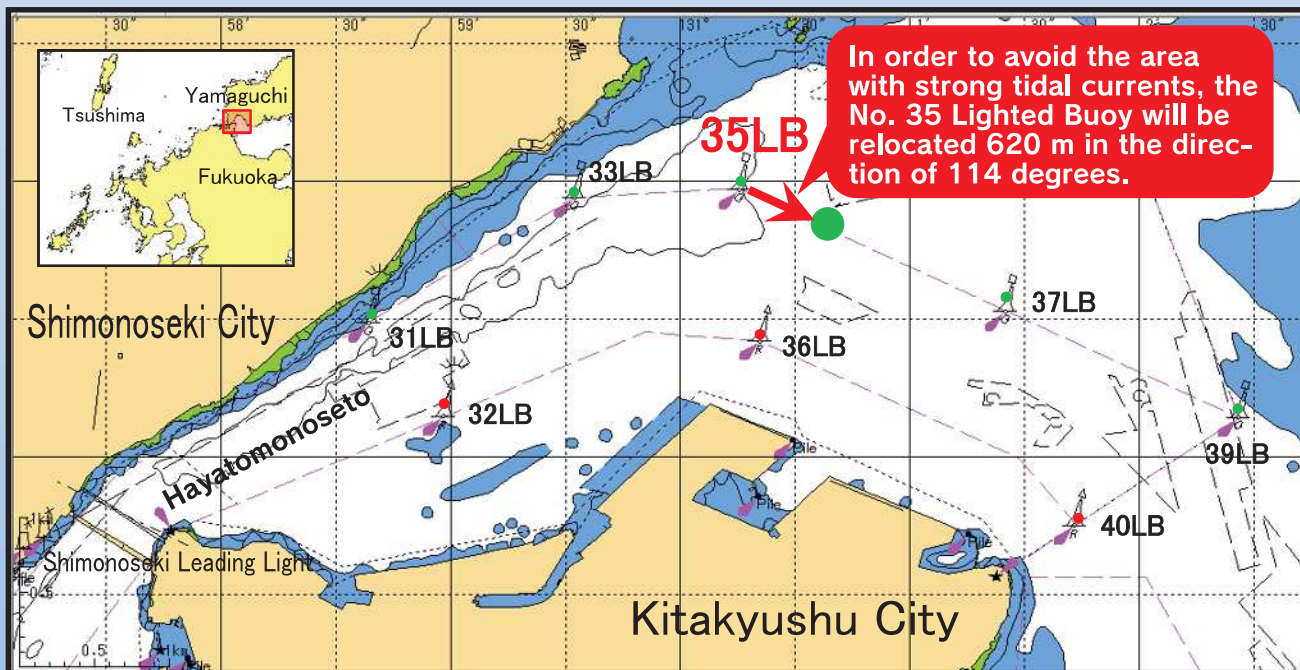


# Relocating the Kanmon Route No. 35 Lighted Buoy



The Kanmon Route No. 35 Lighted Buoy, which has been located in an area with strong eastward tidal currents, causes vessels to converge and often hit the buoy. The lighted buoy will be relocated to a new position to prevent the buoy from being damaged or moved. Please note that there will be no object at the old position after the lighted buoy is relocated.

## Notes:

- ◆ The lighted buoy will be relocated but the normal line for passage will not change.
- ◆ Special caution is needed for vessels that use the No. 35 Lighted Buoy as a guide for veering.  
**(Keep to the right in the passage!)**

### 1. Expected date of relocation

Late October 2015

### 2. New position

North latitude: 33 degrees, 58 minutes, 50 seconds  
East longitude: 131 degrees, 00 minutes, 37 seconds

### 3. Old position

North latitude: 33 degrees, 58 minutes, 58 seconds  
East longitude: 131 degrees, 00 minutes, 15 seconds

## The beacon number of the Kanmon Route No. 35 Lighted Buoy will remain lit at night.

Present state



Change

After change



### 1. Expected start of lit number:

Late October 2015

### 2. Details of lighting

"35" will be continuously lit at night (green).



Traffic Department, 7th Regional Coast Guard Headquarters

# For Safe navigation in or around Kanmon area

This map is only reference for navigation, and be sure to use the latest proper chart, such as W135 for navigation

2015

Captain of the Port, Kanmon

## Proper Operation of AIS

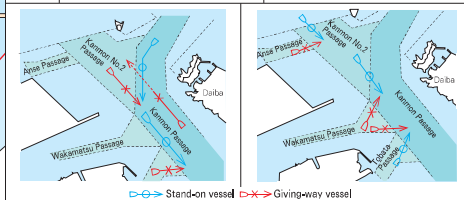
KEEP WATCH ON VHF CH16 (Only Japanese & English)

Emergency Number at Sea, Dial #118J

- When navigating within port or around port boundaries, every vessel (except some exempt vessels) shall send AIS destination information.
- Within Kanmon Port, vessels (except some exempt vessels) are required to monitor transmissions from Kanmon Marine Traffic Advisory Service Center.

### Navigation Rules in Kanmon Port that require attention or to which attention should be given. (Extracts)

LEGEND	In case of meeting situation between a vessel proceeding Kanmon Passage and a vessel proceeding Kanmon No.2 Passage	In case of meeting situation between a vessel proceeding Kanmon Passage and a vessel coming out of Tobata Passage and a vessel coming out of Wakamatsu Passage.
	In case of meeting situation between a vessel proceeding Kanmon Passage and a vessel proceeding Kanmon No.2 Passage	In case of meeting situation between a vessel proceeding Kanmon Passage and a vessel coming out of Tobata Passage and a vessel coming out of Wakamatsu Passage.

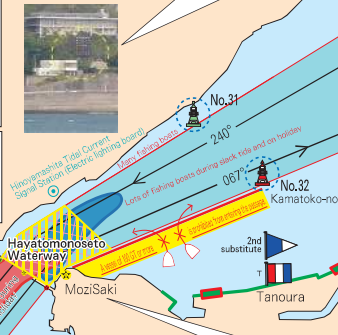


- A vessel may overtake other vessel in the Kanmon Passage, consider surrounding situation and only when all conditions described below are met. (Except Hayatomo-Seto Waterway)
- When a vessel being overtaken does not need to take any cooperative movement in order for an overtaking vessel to pass safely.
  - When an overtaking vessel can keep out of the way of any other vessels safely.

Examples	Variety	Meaning
	E or W	E : Eastward current W : Westward current
	0 ~ 13	Velocity of current (knot)
	↑ or ↓	↑ : getting faster, ↓ : getting slower

Meaning of an example  
The present current is 9knots easterly and getting faster.

Tidal current information service - Tel: 0832-22-8810  
Weather information service - Tel: 093-921-9177



Notice : In blue-shaded section (east current) and red-shaded section (west current) in the strongest current area, eastbound vessels tend to drift to the center of the passage by the east and west currents.

**[Superior Speed over 4 knots]**  
Vessels navigating Hayatomo-Seto against the current shall maintain a speed of 4 knots or more greater than that of the current.

**[No overtaking]**  
Vessels shall not overtake other vessels in Hayatomo-Seto Waterway.

※Hayatomo-Seto Waterway: Kanmon Passage between the west side line of Kanmon Bridge and the line of 130 degree from the Hinoyamashita Tidal Current Signal Station.

**Common site of buoy collisions!**

30 35 39  
1 2  
Sakaigawa

### TRAFFIC CONTROL SIGNALS IN HAYATOMONOSETO WATERWAY

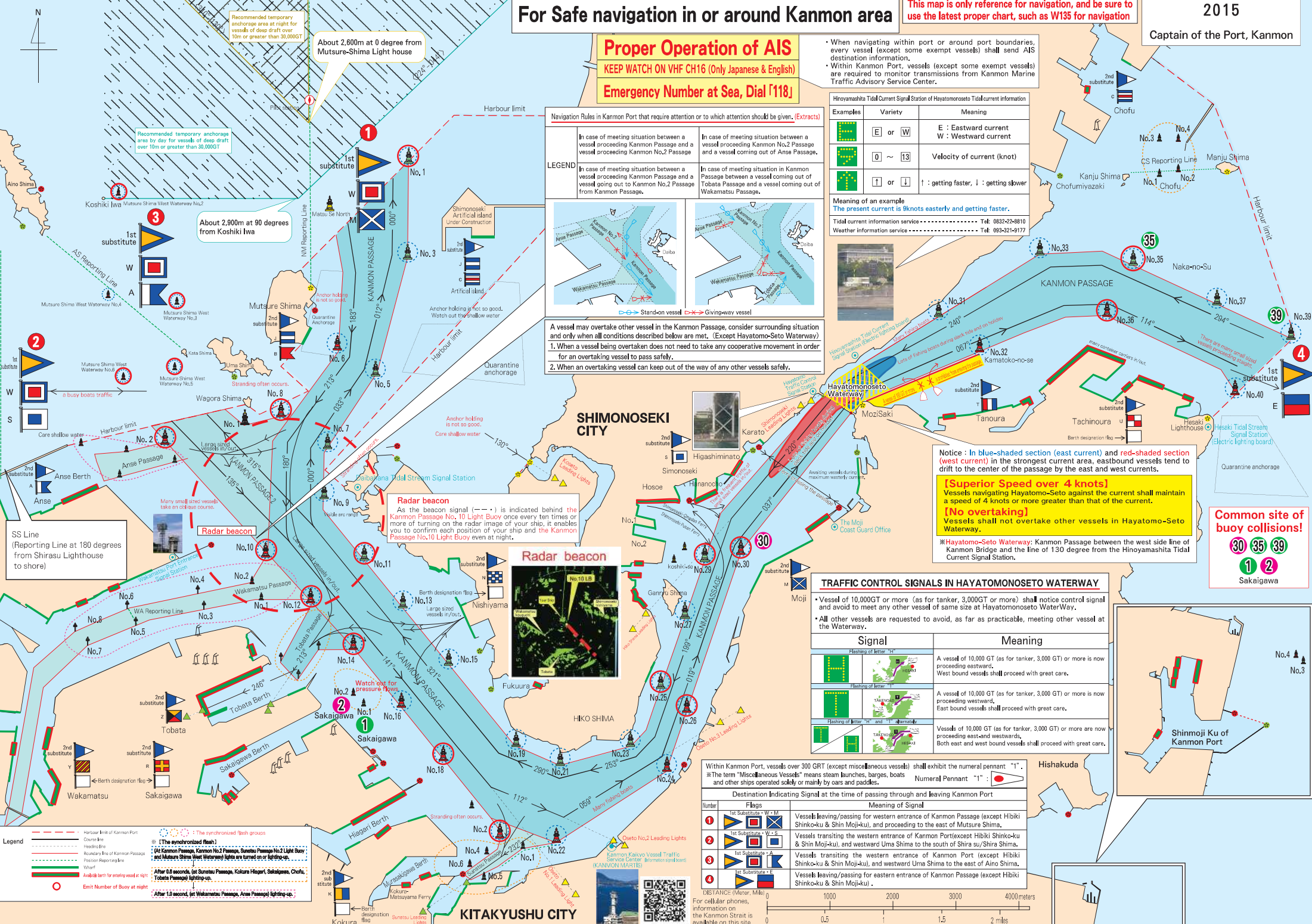
- Vessel of 10,000GT or more (as for tanker, 3,000GT or more) shall notice control signal and avoid to meet any other vessel of same size at Hayatomo-Seto WaterWay.
- All other vessels are requested to avoid, as far as practicable, meeting other vessel at the Waterway.

Signal	Meaning
	A vessel of 10,000 GT (as for tanker, 3,000 GT) or more is now proceeding eastward. West bound vessels shall proceed with great care.
	A vessel of 10,000 GT (as for tanker, 3,000 GT) or more is now proceeding westward. East bound vessels shall proceed with great care.
	Vessels of 10,000 GT (as for tanker, 3,000 GT) or more are now proceeding east-and westwards. Both east and west bound vessels shall proceed with great care.

Within Kanmon Port, vessels over 300 GRT (except miscellaneous vessels) shall exhibit the numeral pennant "1".

※The term "Miscellaneous Vessels" means steam launches, barges, boats and other ships operated solely or mainly by oars and paddles.

Number	Flags	Meaning of Signal
1		Vessels leaving/passing for western entrance of Kanmon Passage (except Hibiki Shinko-ku & Shin Moji-ku), and proceeding to the east of Mutsure Shima.
2		Vessels transiting the western entrance of Kanmon Port(except Hibiki Shinko-ku & Shin Moji-ku), and westward Uma Shima to the south of Shira su/Shira Shima.
3		Vessels transiting the western entrance of Kanmon Port (except Hibiki Shinko-ku & Shin Moji-ku), and westward Uma Shima to the east of Aino Shima.
4		Vessels leaving/passing for eastern entrance of Kanmon Passage (except Hibiki Shinko-ku & Shin Moji-ku).



**Legend**

- Harbour limit of Kanmon Port
- Quarantine anchorage
- Headline
- Boundary line of Kanmon Passage
- Passage Reporting Line
- Wind
- After 0.8 seconds, (at Sunatsu Passage, Kokura Higashi, Sakaigawa, Chofu, Tobata Passage) lighting-up.
- After 1.0 second, (at Wakamatsu Passage, Anse Passage) lighting-up.

**SS Line**  
(Reporting Line at 180 degrees from Shirasu Lighthouse to shore)

**Radar beacon**  
As the beacon signal (---) is indicated behind the Kanmon Passage No. 10 Light Buoy once every ten times or more of turning on the radar image of your ship, it enables you to confirm each position of your ship and the Kanmon Passage No.10 Light Buoy even at night.

**Radar beacon**  
As the beacon signal (---) is indicated behind the Kanmon Passage No. 10 Light Buoy once every ten times or more of turning on the radar image of your ship, it enables you to confirm each position of your ship and the Kanmon Passage No.10 Light Buoy even at night.

**Watch out for pressure flows**

**After 0.8 seconds, (at Sunatsu Passage, Kokura Higashi, Sakaigawa, Chofu, Tobata Passage) lighting-up.**

**After 1.0 second, (at Wakamatsu Passage, Anse Passage) lighting-up.**

