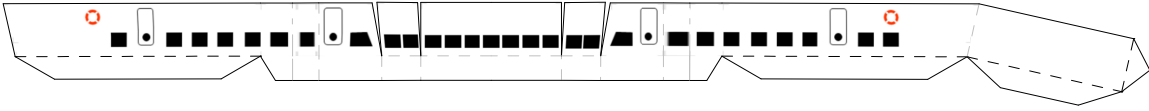
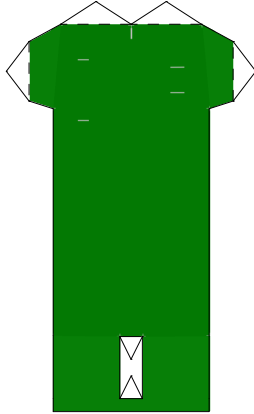


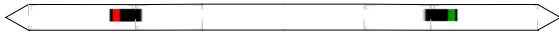
H2



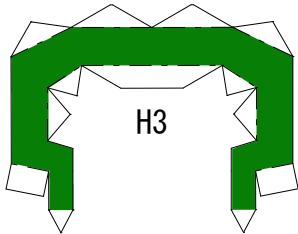
H1



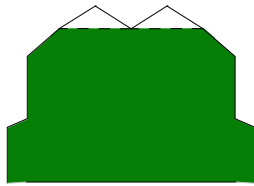
H4



H3



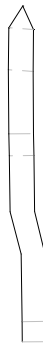
H6



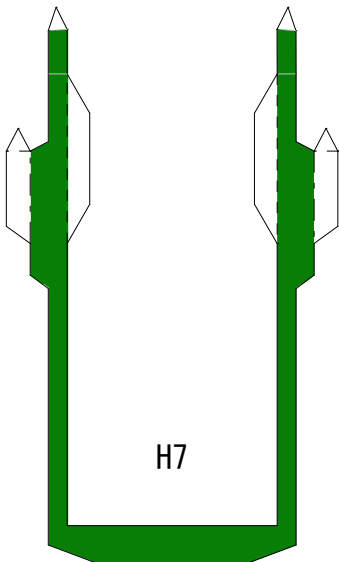
H9



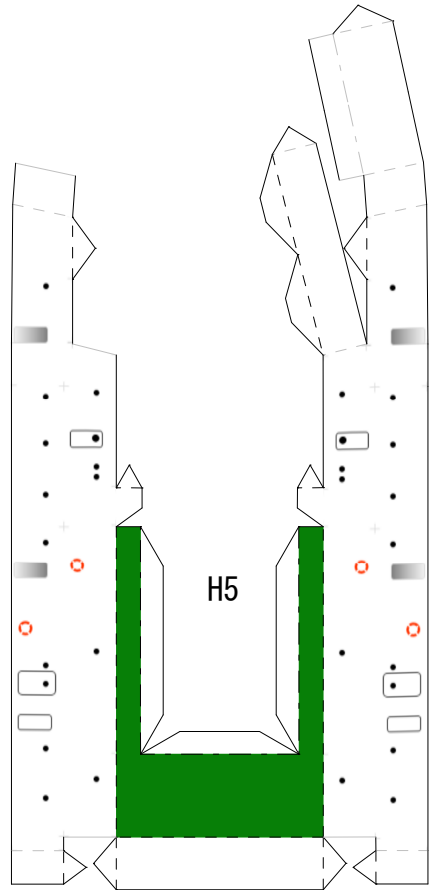
H8



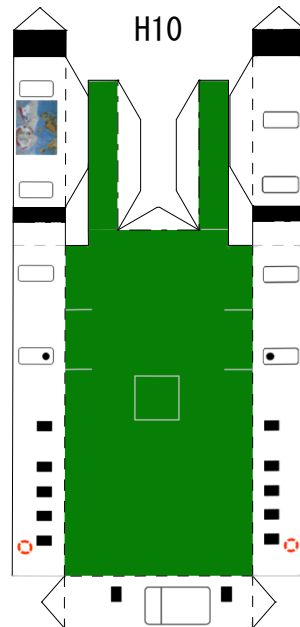
H7

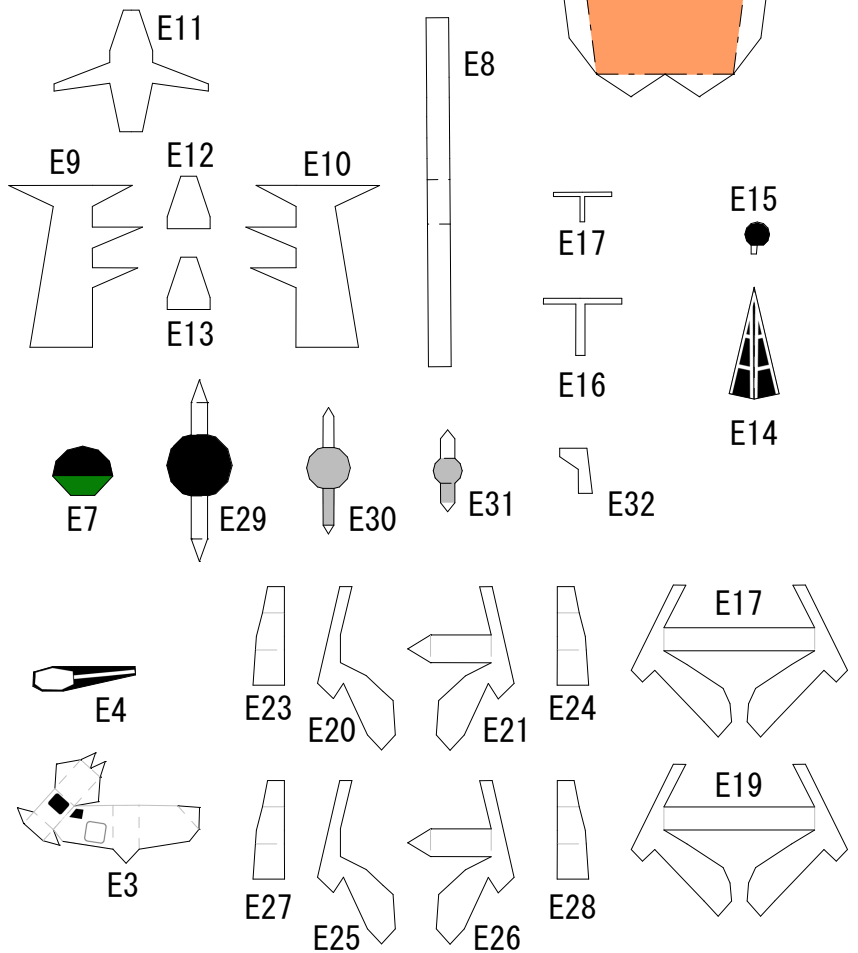
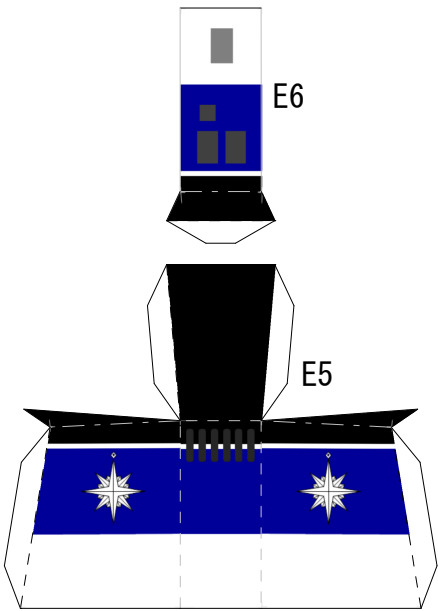
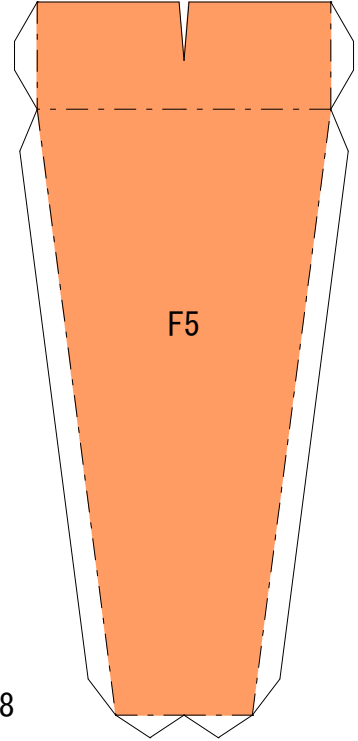
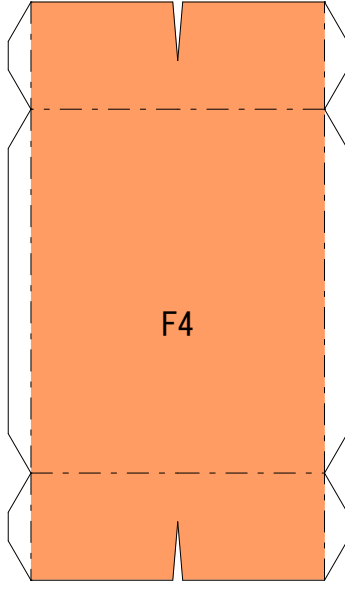
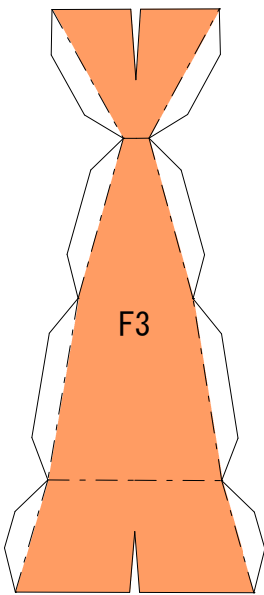
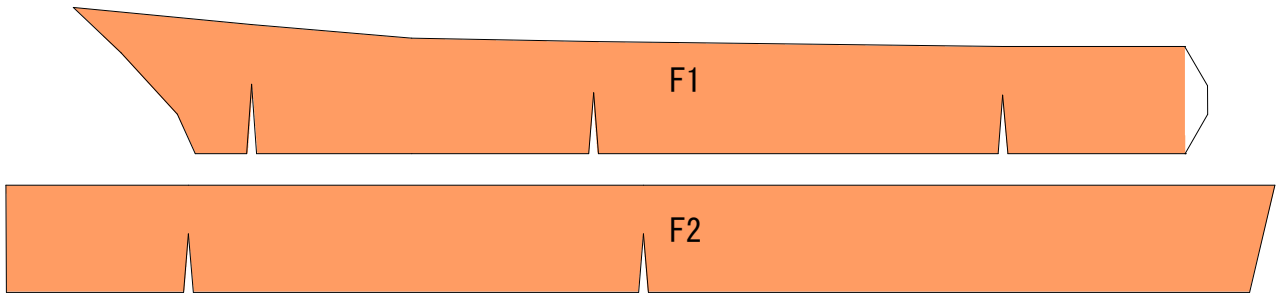


H5

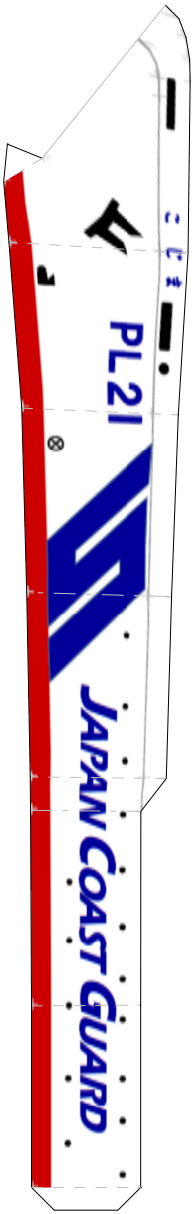


H10

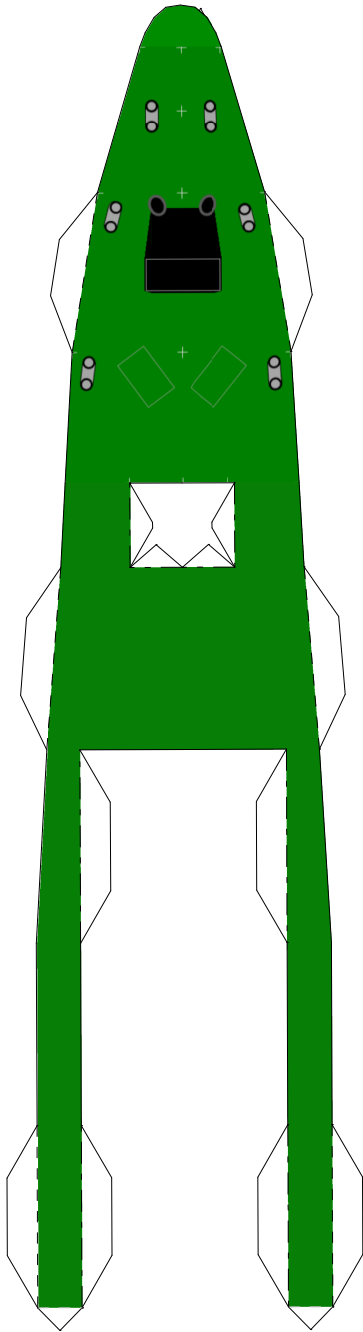




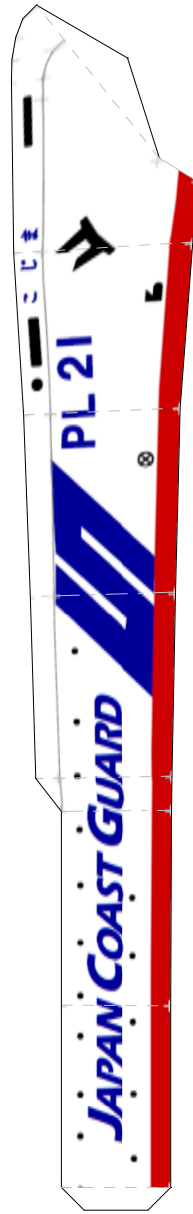
B4



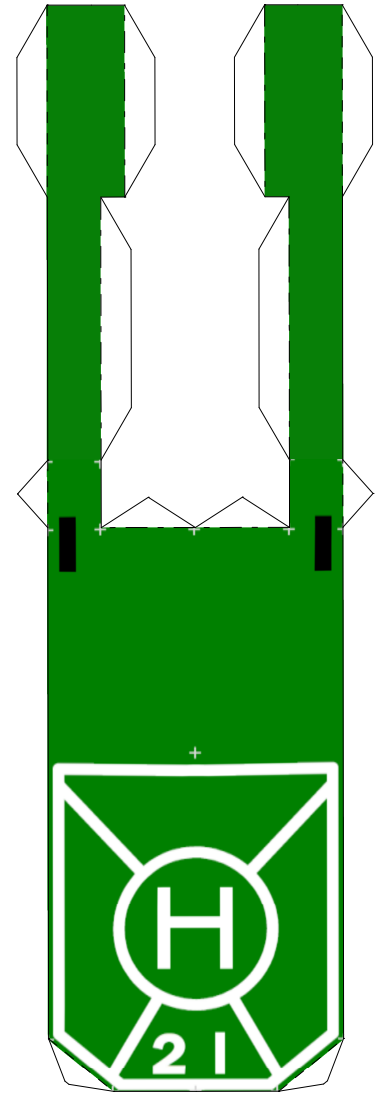
B1



B3

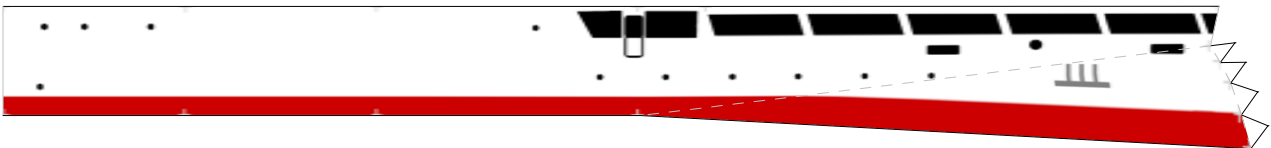


B2

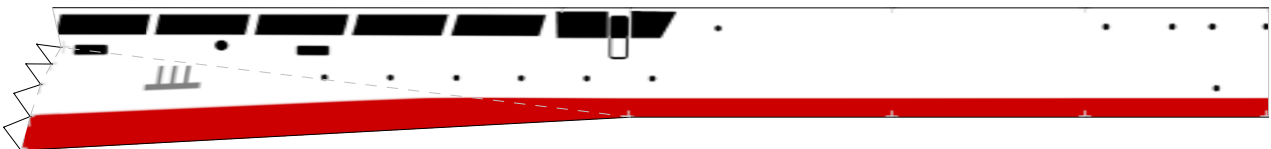


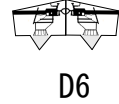
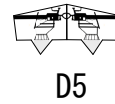
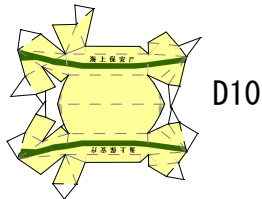
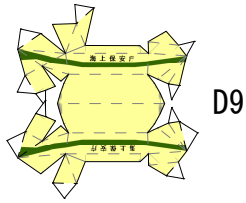
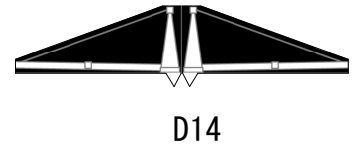
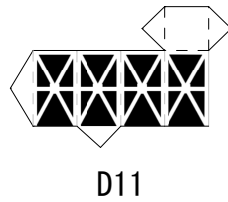
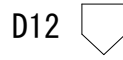
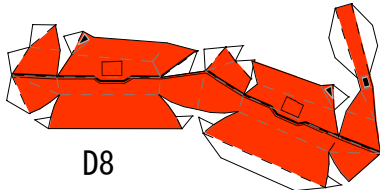
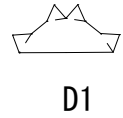
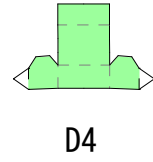
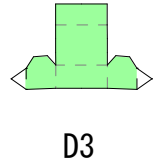
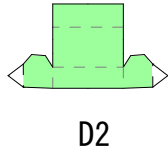
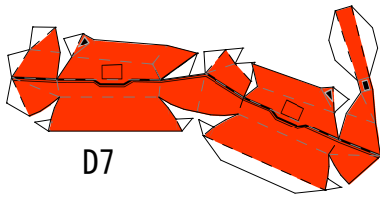
B7

B6



B5





D15



<b>PL-21 こじま</b>	縮尺 1/360
竣工	平成5年3月11日
速力	18ノット
建造所	日立造船株式会社 舞鶴工場
乗員	118名
総トン数・長さ・幅	約3,000トン・115m・14m

<b>PL-21 こじま</b>	縮尺 1/360
竣工	平成5年3月11日
速力	18ノット
建造所	日立造船株式会社 舞鶴工場
乗員	118名
総トン数・長さ・幅	約3,000トン・115m・14m