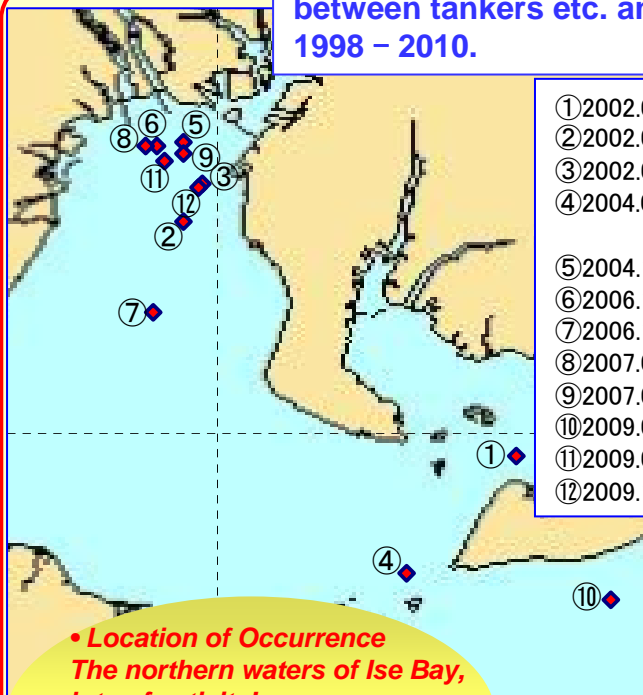


Be Aware of Fishing Vessels and their Trawl Nets!!

In the Ise Bay and Mikawa Bay areas, commercial trawlers operate more or less all year round in major shipping lanes used by cargo ships and so on. In particular, trawl fishing using a pair of boats to drag a single net can involve nets as much as 500m in length, and it is by no means unknown for a cargo ship or the like to catch on one of these nets and capsize the fishing boats.

Location of incidents in the Ise and Mikawa Bays between tankers etc. and trawlers and their nets, 1998 - 2010.



- | | |
|--|--|
| ① 2002.04.25 AM0630 Cargo ship | } Two-boat trawling team
(Capsized) |
| ② 2002.08.04 AM0608 Tanker | |
| ③ 2002.08.08 AM0725 Cargo ship | |
| ④ 2004.06.30 PM1637 Passenger liner/Single trawler | |
| ⑤ 2004.10.15 AM0710 Cargo ship | } Two-boat trawling team
(Damage to or loss of equipment) |
| ⑥ 2006.10.13 AM0625 Cargo ship | |
| ⑦ 2006.11.16 AM1005 Tanker | |
| ⑧ 2007.03.02 AM0635 Cargo ship | |
| ⑨ 2007.09.10 AM0710 Cargo ship | } Two-boat trawling team (Capsized) |
| ⑩ 2009.07.07 AM0542 Tanker | |
| ⑪ 2009.09.09 AM0555 Cargo ship | |
| ⑫ 2009.10.02 AM0615 Cargo ship | |

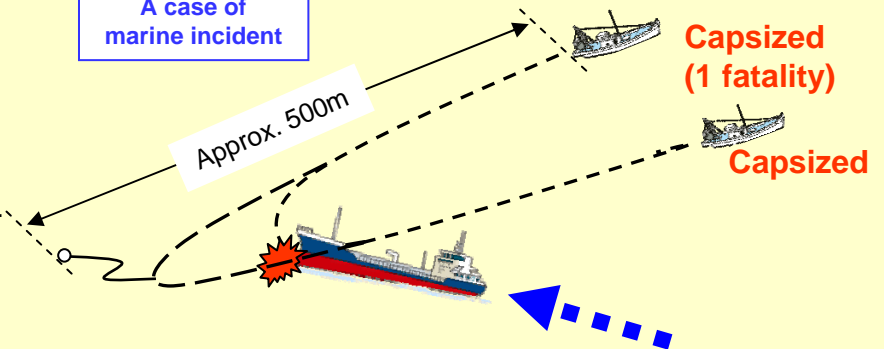
- **Location of Occurrence**
The northern waters of Ise Bay, lots of activity!
- **Period of Occurrence (Mar–Nov)**
Lots summer and autumn!
Lots in the early morning!

<<The Main Causes of Marine Accidents>>

- **Sailing between two fishing boats without realizing they're pair trawling**
- **Realizing the fishing boats are pair trawlers but having insufficient room to give way**
- **Failing to properly check for pair trawlers, being slow to notice mast signals and buoys**

In the early morning, a cargo ship had set out to sea from Nagoya Port, and upon assessment of two vessels up ahead it reduced speed and changed course thinking it had taken all the necessary precautions to avoid collision. It hadn't taken into account the trawling net. It ploughed into causing both of the smaller vessels to capsize.

A case of marine incident



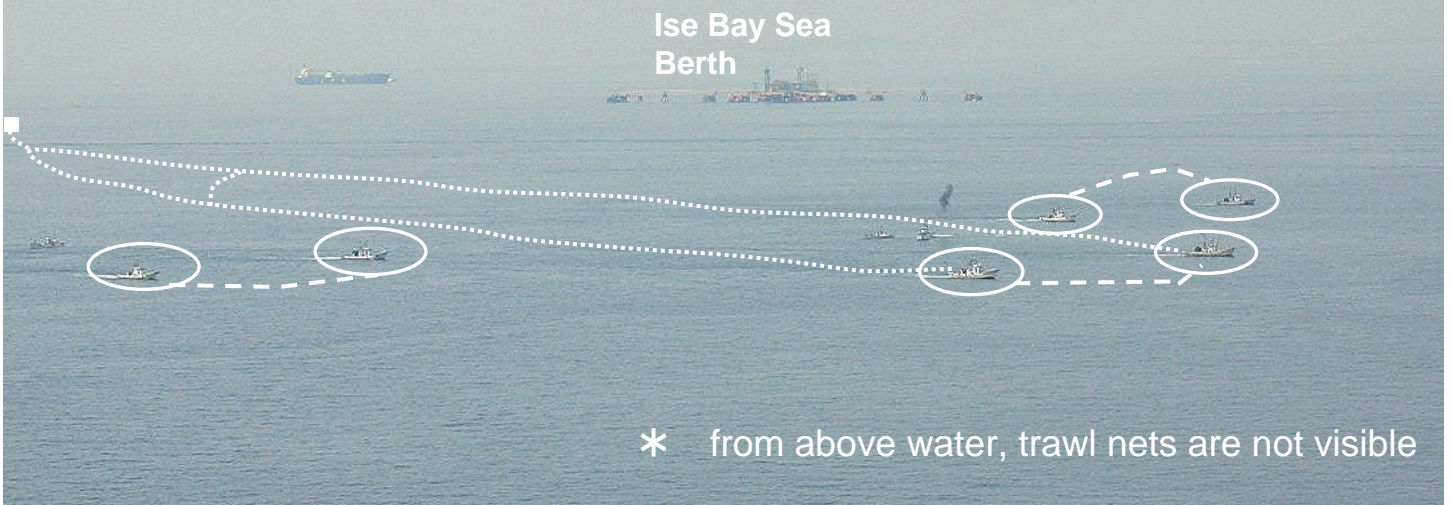
What to Do to Avoid Further Incidents

◎ Be aware of the location of fishing fleets, and maintain a safe distance

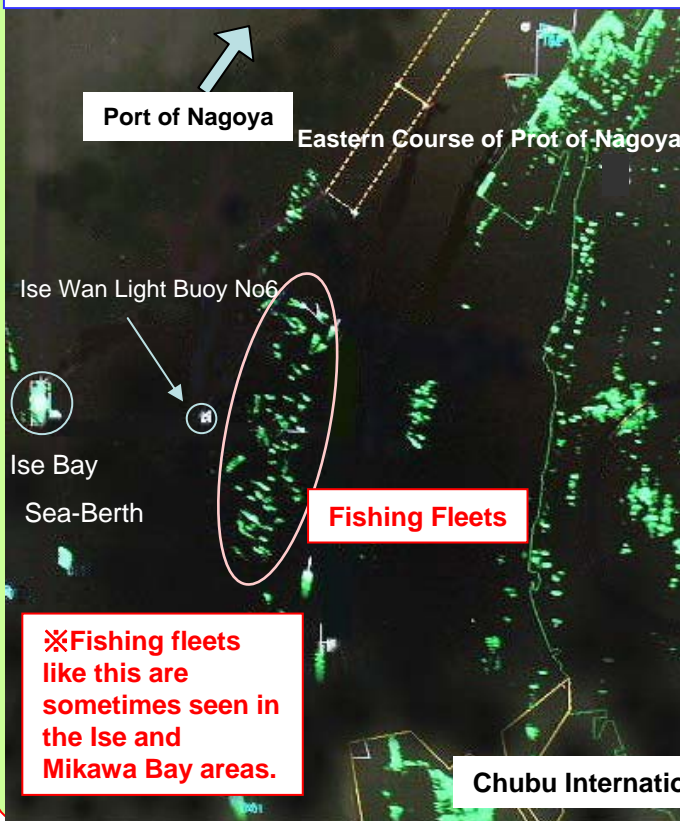
◎ Keep well clear of fishing fleets

◎ Maintain a vigilant watch with binoculars, radar and so on

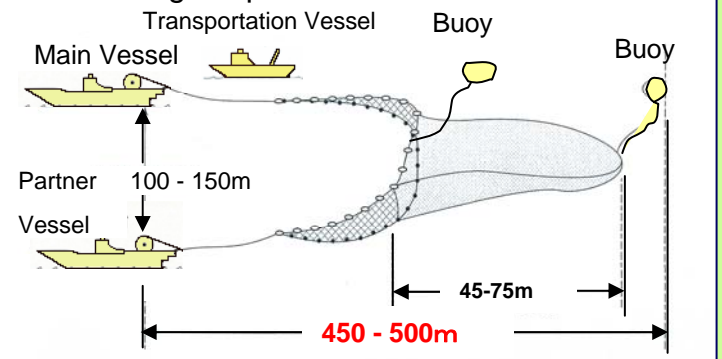
- Confirm speed and course of fishing boats
- Is there a warp cable or flag buoy astern?



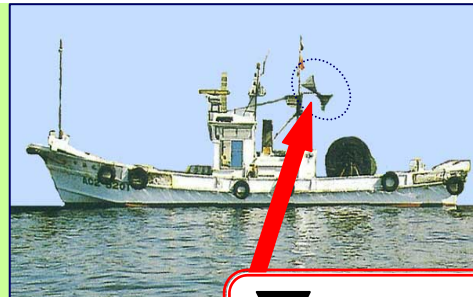
Radar image of fishing fleet (2008.9.30, approx. 0600)



Pair trawling in operation



*From above water, trawl nets are not visible.



A drum-shaped object is always raised when in operation.