

Notice: Enhancement of VTS information provision for dragging anchor vessels.

The 4th Regional Coast Guard Headquarters has enhanced VTS information provision service started additional operation of providing information for the vessel by VTS center since August 30 2019; the purpose of the enhancement is to avoid possible collisions between the important facilities and a vessel that is dragged by strong wind in the ISE WAN and MIKAWA WAN.

1 North of ISE WAN area (North of latitude 34 degrees 45 minutes north)

When wind blows stronger than 12 meters per second continuously at The Storm Tide Breakwater East Signal station, Nagoya Ko Vessel Traffic Service Center (Nagoya Harbor Radar) provides "Warning of dragging anchor by strong wind" for all vessels via Nagoya Coast Guard Radio and starts watching AIS (Automatic Identification System) vessel's anchor position.

Upon finding possible dragging anchor caused by strong wind, Nagoya Harbor Radar provides information to the vessel by VHF radio telephone.

Additionally, Nagoya Harbor Radar gives warning(s) via AIS to the vessels that are anchoring nearby or approaching to the designated facilities, excluding Atsumi Thermal power station.

2 South of ISE WAN area (South of latitude 34 degrees 45 minutes north) and MIKAWA WAN

At the time of marine typhoon warning or marine storm warning or when wind of 25 meters or more continuing in the Isewan Vessel Traffic Service Center (in the case of wind from the east, observing in Daio-saki light house), Isewan Vessel Traffic Service Center (Isewan Martis) monitors AIS vessel's anchor position.

Upon finding dragging anchor by strong wind, Isewan Martis provides information to the vessel by VHF radio telephone.

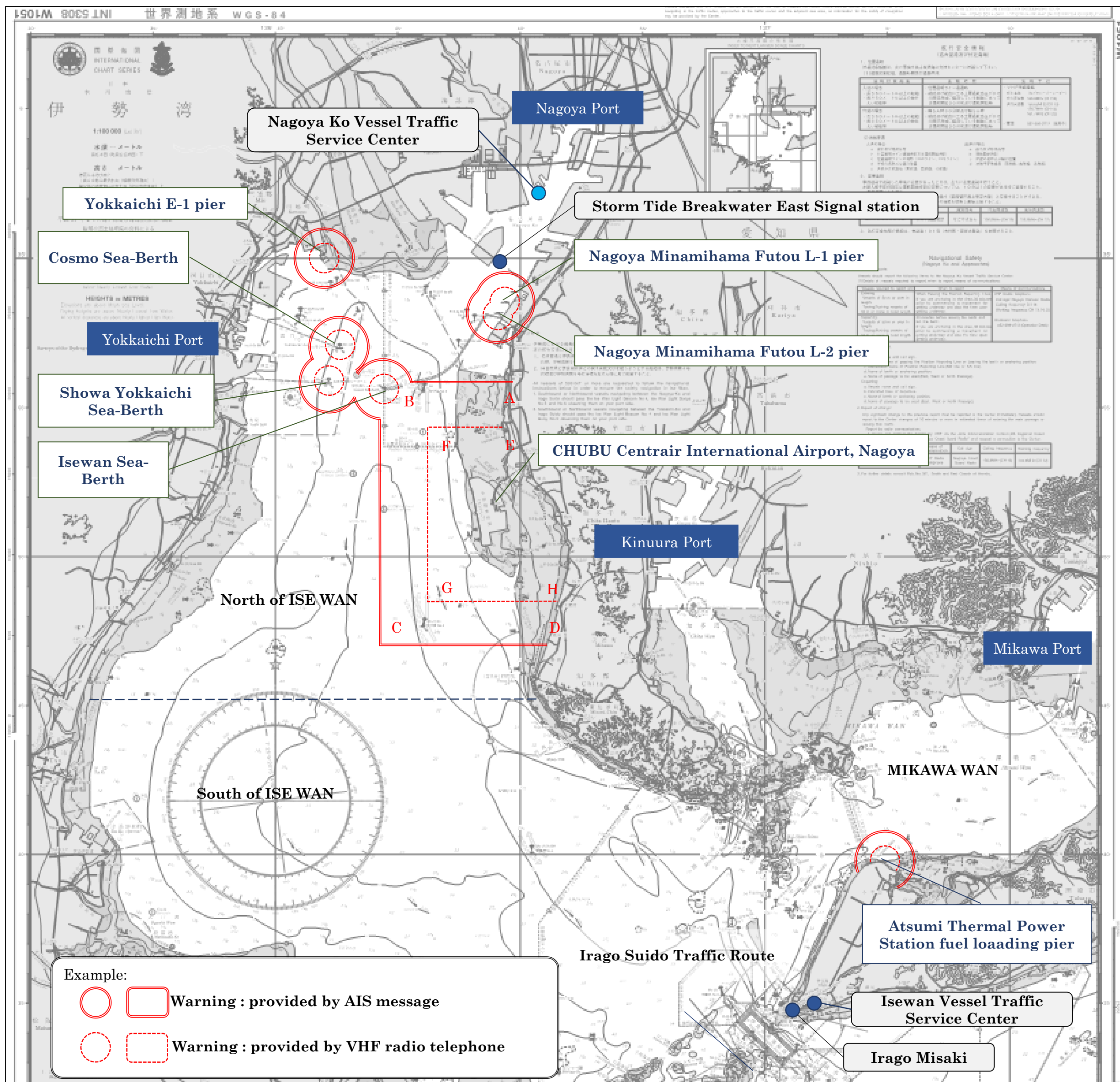
Additionally, Isewan Martis gives warning(s) via AIS to the vessels that are anchoring nearby or approaching to Atsumi Thermal power station.

3 Target Sea Area and Information provision method

Information Provision method Target Facilities	Warning:provided by AIS message	Warning:provided by VHF radio telephone
Nagoya Minamihama Futou L-1 pier	Sea area within a radius 1 mile from the each facility. #1	Sea area within a radius 0.5 mile from the each facility.
Nagoya Minamihama Futou L-2 pier		
Yokkaichi E-1 pier		
Showa yokkaichi Sea-Berth		
Cosmo Sea-Berth		
Isewan Sea-Berth		
Atsumi Thermal Power Station fuel loading pier		
CHUBU Centrair International Airport,Nagoya	Sea area surrounded by the following four points and shore. A point:34-55-54N 136-49-27E B point:34-55-54N 136-44-16E C point:34-47-05N 136-44-16E D point:34-47-05N 136-51-04E	Sea area surrounded by the following four points and shore. E point:34-54-24N 136-49-18E F point:34-54-24N 136-46-05E G point:34-48-35N 136-46-05E H point:34-48-35N 136-51-36E

#1 From April 15th,we changed from "sea area within a radius 1 mile from the center of each facility" to "sea area within a radius 1 mile from the each facility"

[Target Area Map]



4 Important Notes

- a. During the anchoring, it is requested to place an anchor watcher who may contact with VTS operators and/or patrol vessels via VHF in order to tell the anchor condition or instruction.
- b. During the anchoring, it is recommended to check the latest weather forecast and appropriate length of the anchor chain.
- c. Depending on the conditions, it may be possible that the information or warning(s) from the VTS centers could not be reached to the vessels that stay even in the AIS Service Area.



Contact us

North of Isewan : Nagoya Harbor Rador on channel 16(VHF)

South of Isewan and Mikawawan : Isewan Martis on channel 16(VHF)