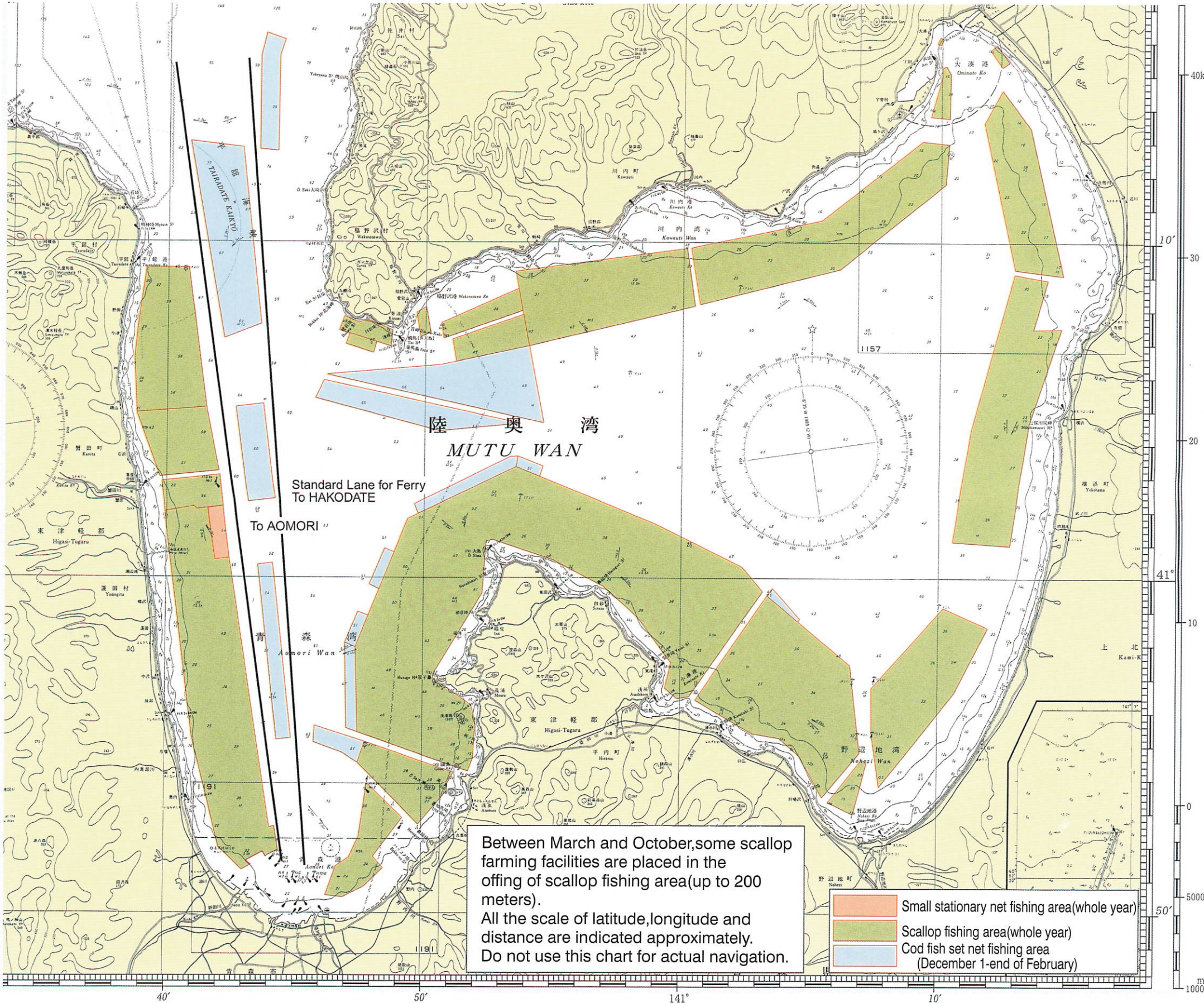
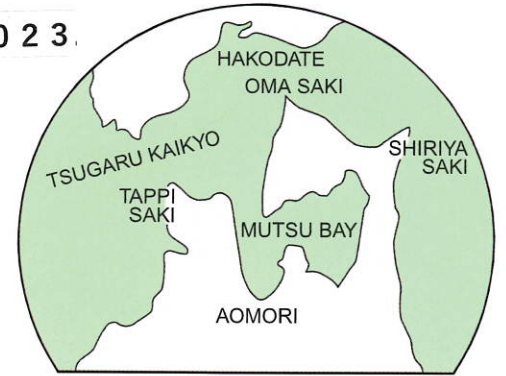


TO PREVENT ACCIDENTS IN MUTSU BAY

[Fishery Facility Locations of Scallop Farms and Codfish Set Nets,etc.] As of April, 2023.

Please be informed that scallop farms and other facilities are located in Mutsu Bay as shown on the marine chart below. It is mandatory that you all exercise utmost caution when sailing into or departing from Mutsu Bay, because a considerable number of accidents have already occurred. Some vessels have collided with the facilities when sailing into this bay to avoid a stormy weather, etc. Beware of dangers in Mutsu Bay.



Telecommunication Watch System in Mutsu Bay (24-hour Watch)

Communications Center in charge: Second Regional Coast Guard Headquarters Communications Center
(Shiogama City, Miyagi Prefecture) (022-365-4999)

Call Name: **"SHIOGAMA Coast Guard RADIO"**

Watch Frequencies: Telephone: **CH 16**

Identification Signal: **"004310201"** (Digital Selective Calling Device)

Digital Selective Calling Device: **2189.5 kHz**

Aomori Coast Guard Office
(Phone: 017-734-2421)

**Department of Agriculture, Forestry, and Fisheries,
Fisheries Bureau, Aomori Prefectural Government**
(Phone: 017-734-9593, Direct line)

**Fishermen's Cooperative Associations,
Aomori Branch**

(Phone: 017-722-4211)

Mutsu Bay Association for Fisheries Promotion
(Phone: 017-722-4213)

Foundation It is carrying out gaining support of the Mutsu Ogawara area and an industrial development foundation.