

Navigate Safely with Great Caution for Fishing Facilities !

To Ships Intended to Enter RUMOI Port :

You are advised to avoid any possible marine accident such as grounding on any of many fishing facilities or gears placed in the waters off RUMOI Port as shown in Figure 1.

To Ships to Intended to Enter RUMOI Port from the Waters off TEURI Island or YAGISHIRI Island :

You are advised to keep your distance of 7(seven) nautical miles from the coastline of each Islands or HOKKAIDO mainland to avoid Scallop Farming Facilities(SFF) as shown Figure 1. If you head straight for RUMOI Port, you might have a high possibility of your grounding on a SFF. (see SFF A in Figures 1 and 2)

To All Ships Underway in the Waters off RUMOI Area :

In addition to SFFs, a number of Salmon Fishing Nets colored in red shown in Figure 1 are placed in the waters off RUMOI area for the period August 31 through November 30 every year; therefore, you are highly recommended to navigate with great caution to avoid any possible problem with a fishing net. For further information, you are invited to refer to " List of Location of Fixed Fishing Facilities -#6103 " issued by JAPAN COAST GUARD for your safety.

Keep a VHF Watch on Channel 16 at All Times !

Ships intended to enter RUMOI Port are requested to keep a good lookout for the other traffic, obstruction, or any possible danger and to keep a VHF watch on channel 16 so that you can make a prompt answer to a call to be made by "HOKKAIDO COAST GUARD RADIO. In addition, JAPAN COAST GUARD gives a warning message through Automatic Identification System(AIS) for a ship facing the risk of grounding, collision, or dragging anchor; therefore, ships are requested to take prompt necessary measures in order to avoid any possible danger in case they receive a warning message as given above.

Figure 3: Location of Shore-Based VHF Radio Stations of JAPAN COAST GUARD

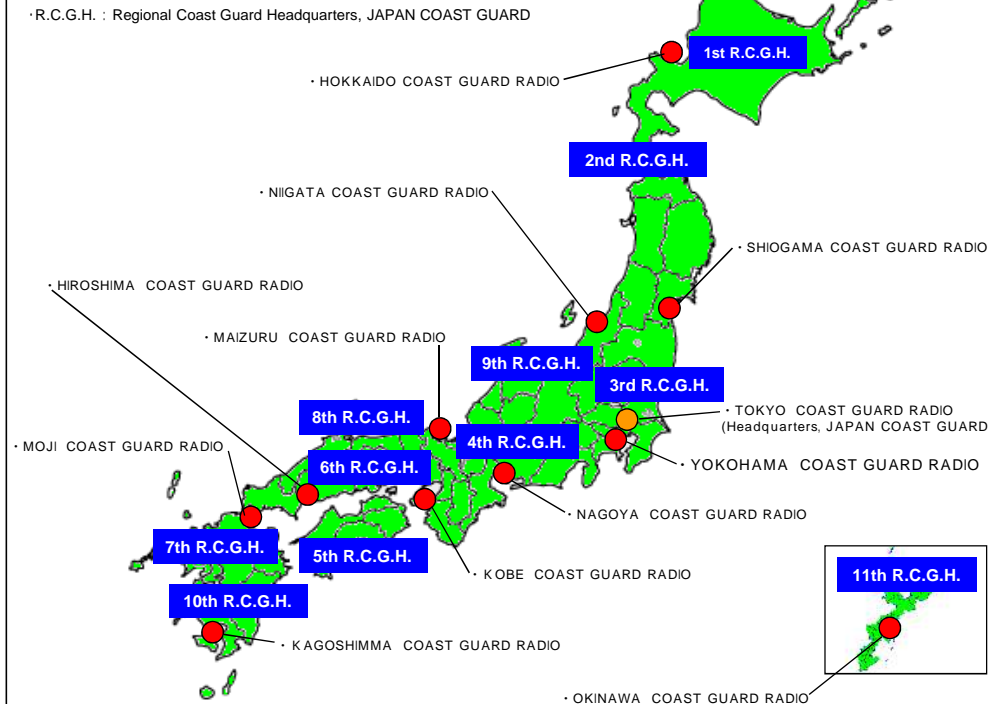
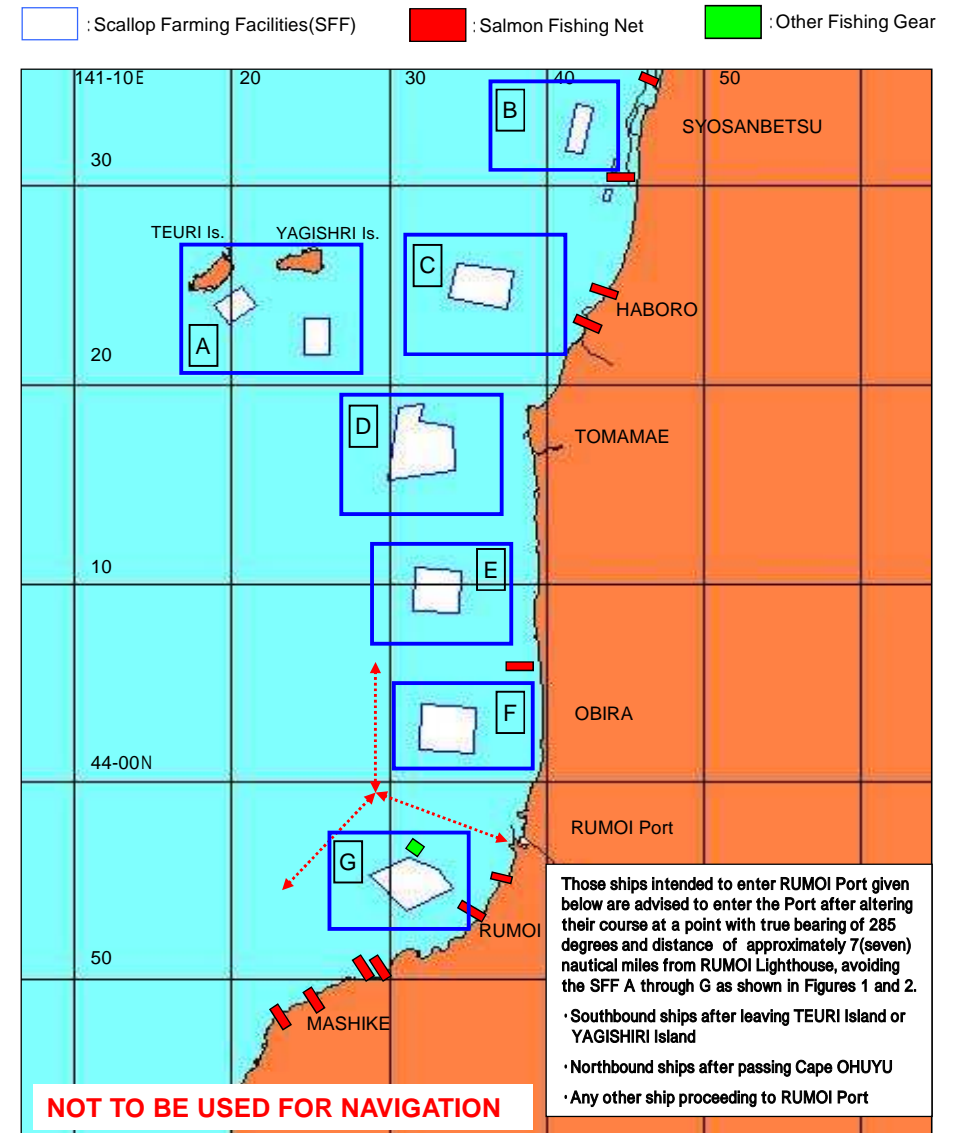


Figure 1: Location of Fishing Facilities and Gears placed in The Waters off RUMOI Area



RUMOI Coast Guard Office, JCG

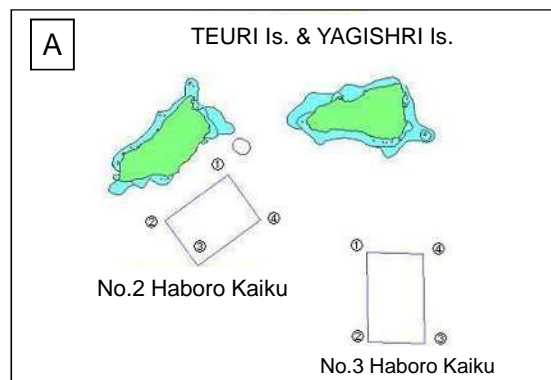
Phone: 0164-42-0414 / Facsimile: 0164-49-2043

WEB Site URL : <http://www6.kaiho.mlit.go.jp/01kanku/rumoi/>

e-mail : jcg1rumoikotsu1-6w6w@mlit.go.jp

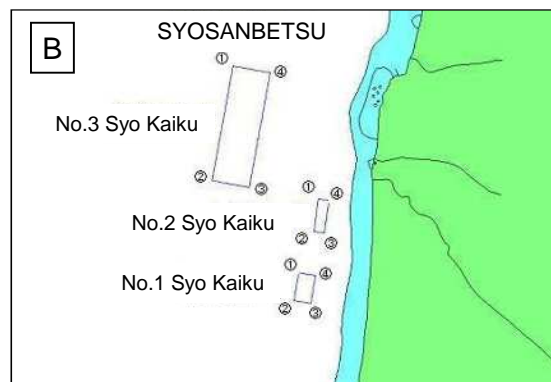
As of November 19, 2015

Figure 2 : Detailed Location of Scallop Farming Facilities(SFF) Placed in The waters off SYOSANBETSU, HABORO, TEURI Island, YAGISHIRI Island, TOMAMAE, OBIRA, and MASHIKE)



No.2 Haboro Kaiku
 44-25.0N 141-20.6E
 44-24.0N 141-18.8E
 44-23.0N 141-19.8E
 44-24.1N 141-21.7E

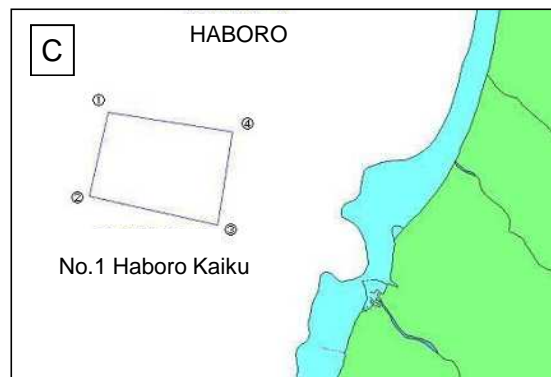
No.3 Haboro Kaiku
 44-23.4N 141-24.6E
 44-21.5N 141-24.6E
 44-21.4N 141-26.3E
 44-23.4N 141-26.3E



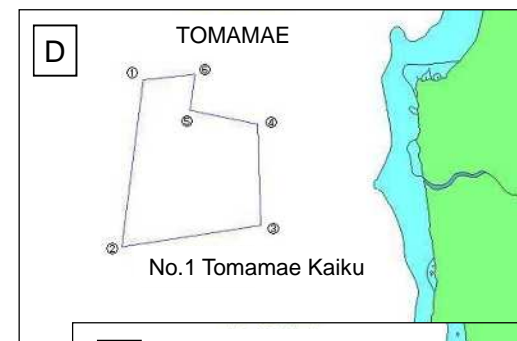
No.1 Syo kaiku
 44-29.9N 141-43.7E
 44-29.2N 141-43.5E
 44-29.2N 141-44.1E
 44-29.8N 141-44.2E

No.2 Syo kaiku
 44-31.4N 141-44.2E
 44-30.6N 141-44.1E
 44-30.6N 141-44.5E
 44-31.4N 141-44.6E

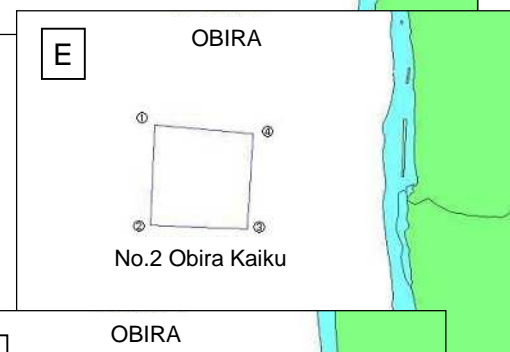
No.3 Syo kaiku
 44-34.1N 141-41.8E
 44-31.7N 141-41.2E
 44-31.5N 141-42.3E
 44-34.0N 141-43.0E



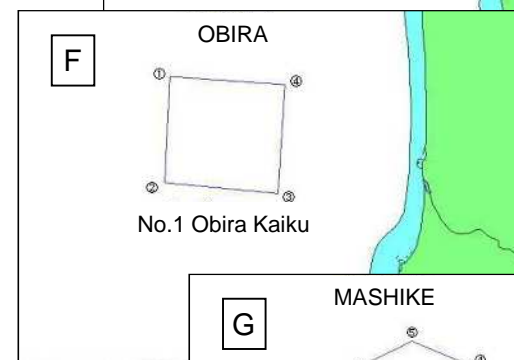
No.1 Haboro Kaiku
 44-26.2N 141-34.3E
 44-24.4N 141-33.8E
 44-23.8N 141-37.5E
 44-25.8N 141-38.0E



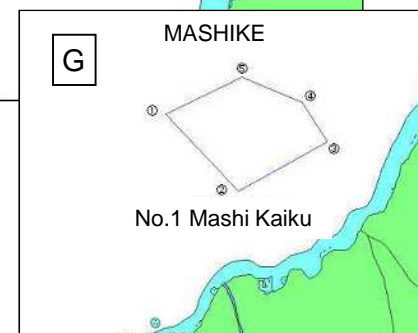
No.1 Tomamae Kaiku
 44-18.9N 141-30.5E
 44-15.2N 141-29.9E
 44-15.7N 141-34.2E
 44-18.0N 141-34.1E
 44-18.3N 141-32.0E
 44-19.1N 141-32.2E



No.2 Obira Kaiku
 44-10.9N 141-31.6E
 44-08.6N 141-31.4E
 44-08.5N 141-34.4E
 44-10.7N 141-34.6E



No.1 Obira Kaiku
 44-04.0N 141-32.0E
 44-01.6N 141-31.9E
 44-01.4N 141-35.4E
 44-03.8N 141-35.6E



No.1 Mashi Kaiku
 43-55.4N 141-28.6E
 43-53.5N 141-31.1E
 43-54.6N 141-34.1E
 43-55.6N 141-33.2E
 43-56.2N 141-31.2E

*** Notes**

- North Latitude and East Longitude : Nautical Chart WGS-84 System
- "Kaiku" : Designated Zone for Scallop Farming Facilities.