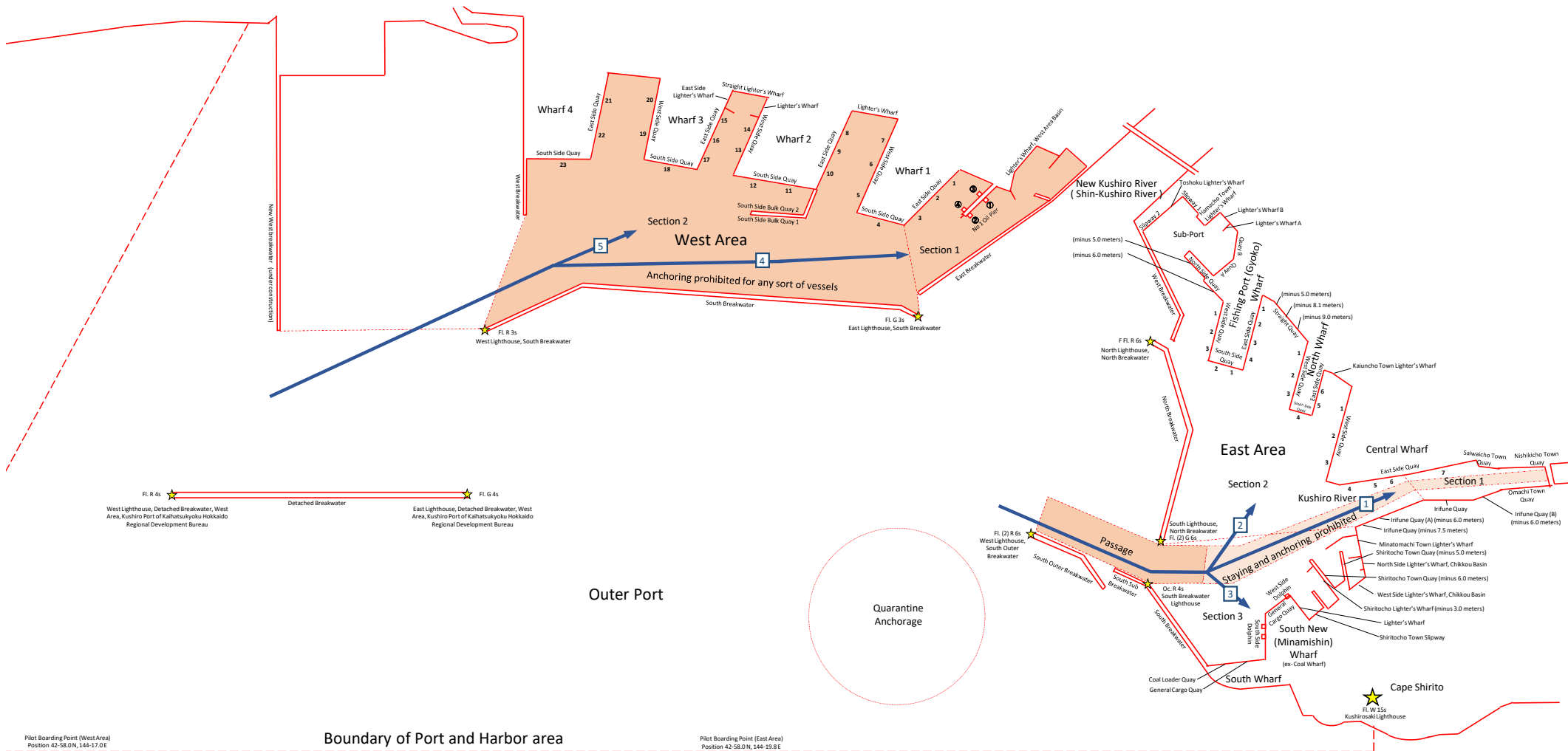


# Map of Kushiro Port Mooring Facilities

As of September 2024



Pilot Boarding Point (West Area)  
Position 42-58.0'N, 144-17.0'E

Boundary of Port and Harbor area

Pilot Boarding Point (East Area)  
Position 42-58.0'N, 144-19.8'E

	Direction Signal Flags	International Flags and Pennants	Message	AIS Input Code
1	2 <sup>nd</sup> substitute over a numeral pennant 1		Proceed toward a mooring facility in Section 1 of East Area	JP KUH 1
2	2 <sup>nd</sup> substitute over a numeral pennant 2		Proceed toward a mooring facility in Section 2 of East Area	JP KUH 2
3	2 <sup>nd</sup> substitute over a numeral pennant 3		Proceed toward a mooring facility in Section 3 of East Area	JP KUH 3
4	2 <sup>nd</sup> substitute over a numeral pennant 4		Proceed toward a mooring facility in Section 1 of West Area	JP KUH 4
5	2 <sup>nd</sup> substitute over a numeral pennant 5		Proceed toward a mooring facility in Section 2 of West Area	JP KUH 5

Q(6) - L Fl. W 15s  
Shiritocho Reef Light Beacon